

Healesville High School (7900)

2008 School Level Report

Please check the data in this report. If, after comparing it with your own records, you deem it to be incorrect or incomplete, follow the directions on the following website:

- <http://www.education.vic.gov.au/management/schoolimprovement/performancecd/>
then select 'School Performance Reports'.
-
-

Contents

	Page No.
Privacy	3
SFO Density and LBOTE	4
Teacher Judgments against the VELs	5-13
NAPLAN - Reading	14
- Writing	15
- Numeracy	16
AIM - Reading	17
- Mathematics	18
VCE	19-22
VET	23
VCAL	24
Teacher Assessment of Student Progress (PSD students)	25-26
Enrolment	27
Student Retention - Apparent	28
- Real	29
Exit Destination	30-33
Student Absence	34
Opinion Surveys - Parent	35
- Staff	36
Performance & Development Culture	37
Staff Sick Leave	38
Teaching Staff Retention	39
Bank Balances	40

Privacy

When reporting on the school's performance to the school community, care must be taken to avoid the disclosure of information that can directly or indirectly identify an individual. This may be a particular issue when reporting on the achievement of specific cohorts of students or the opinions of staff where there are small numbers.

In situations where privacy cannot be assured, schools may wish to report on the mean result or provide a written comment on school, year level or cohort performance.

Where the School Level Report is provided to school council members as part of any annual reporting process, or used for discussion on a school's performance, such as in consultation with the school community in the school self-evaluation process, it is important to remind school community members of their duty to only use this information for the purpose it was provided, and that the material must be kept confidential.

It is important to note that information that identifies an individual or can be used with other readily available information to identify a person is now protected by the *Information Privacy Act 2000* (<http://www.education.vic.gov.au/about/deptpolicies/informationprivacy.htm>).

SFO Density and LBOTE

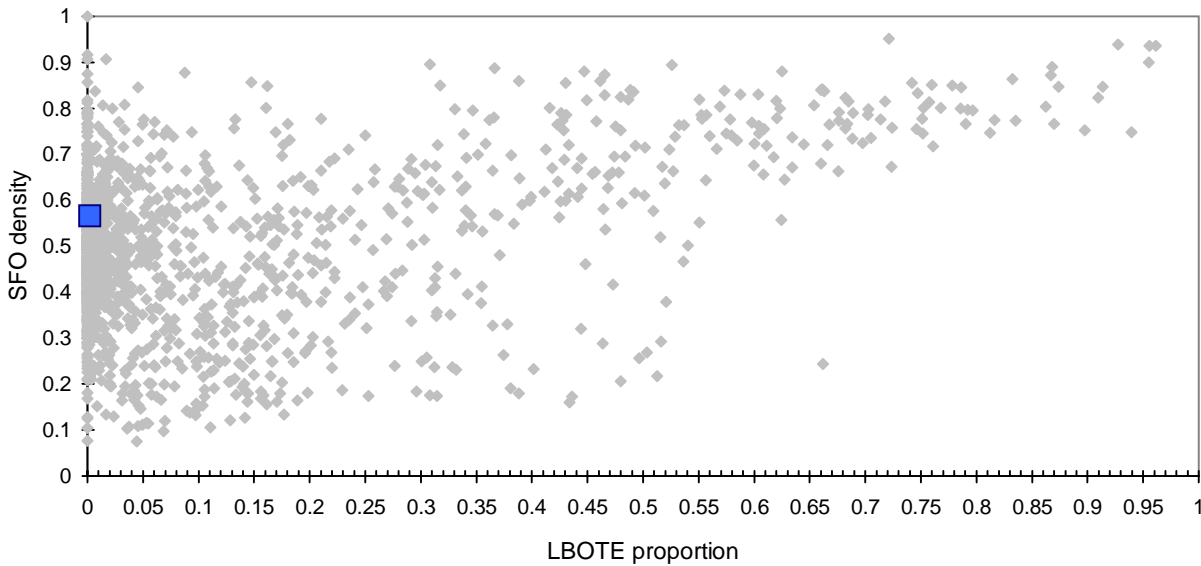
School no: 7900

School name: Healesville High School

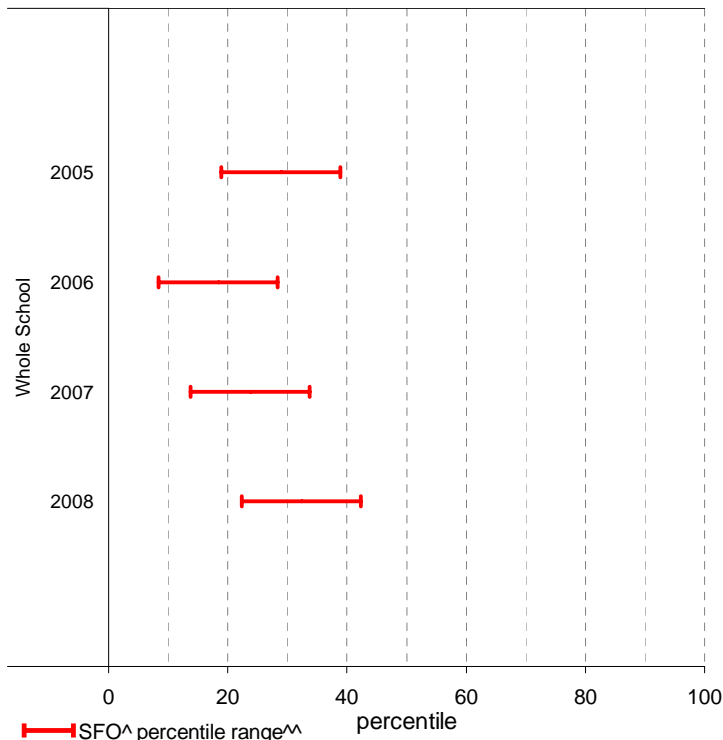
Explanation: The chart below plots the school's 2008 SFO (Student Family Occupation) density[^] and LBOTE (Language Background Other Than English) proportion* against that of all government schools. This school is highlighted as a square on the chart.

	2001	2002	2003	2004	2005	2006	2007	2008
SFO density [^] :					0.56	0.63	0.60	0.56
LBOTE proportion*:	0.00	0.01	0.01	0.01	0.00	0.00	0.00	0.00

School's 2008 SFO density and LBOTE proportion against that of all government schools



School's SFO[^] percentile range^{^^} over time



Notes: [^] The higher the SFO density, the lower the SFO percentile and the lower the socio-economic status (SES).

^{^^} The school's SFO percentile range shows the 20% of schools with an SFO Density most like this school.

* From 2007, a student is LBOTE if either the student or one parent/guardian speaks a language other than English at home. Prior to 2007, a student is LBOTE if the student or one of the parents was born in a non-English speaking country.

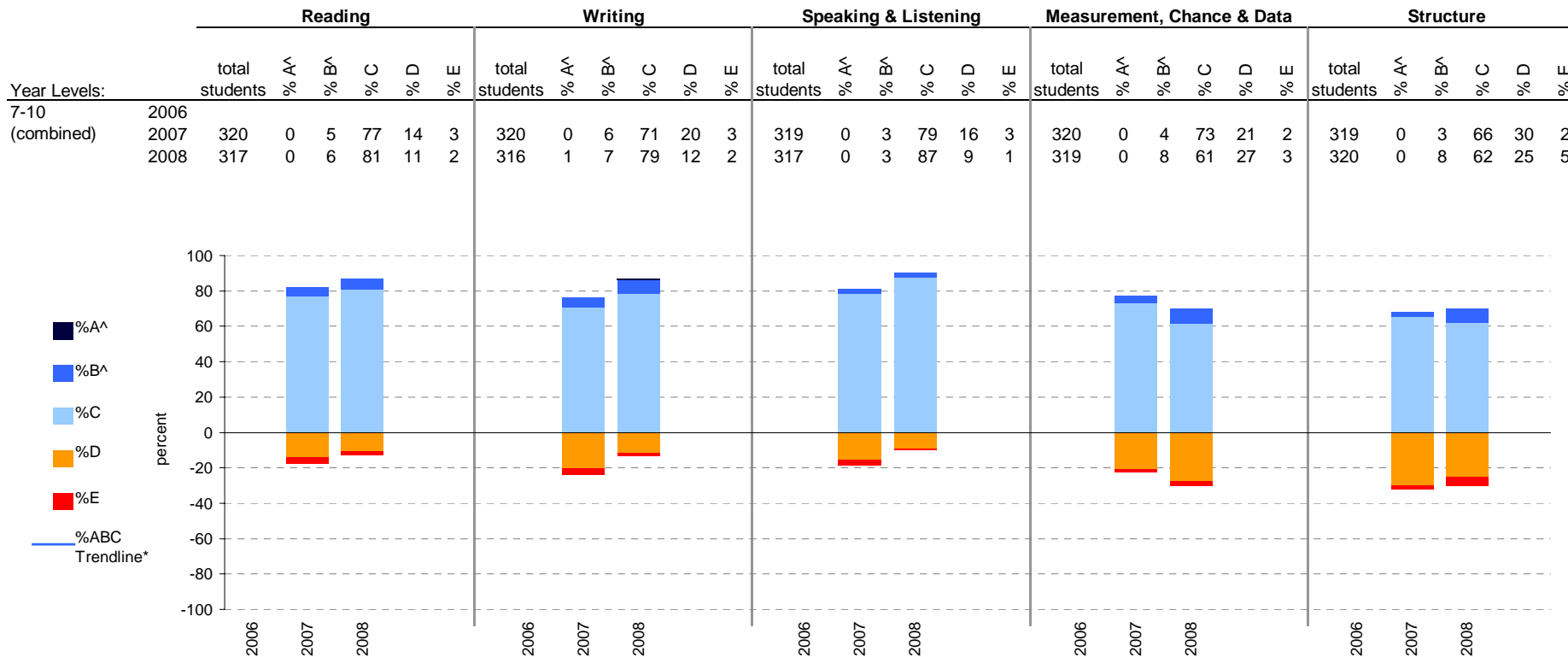
Teacher Judgments against the VELS - Year levels 7-10 combined

School no: 7900

School name: Healesville High School

Source of data: Data retrieved electronically from CASES21.

Explanation: Teacher judgments of student achievement against the VELS.



Notes: * The school trendline is being trialled. It is only plotted when there is data for each calendar year.
 ^ The cutoff between grades A and B changed in 2007. Further information is available on the following website:
<http://www.education.vic.gov.au/studentlearning/studentreports/schools/whatsnew.htm>.

Teacher Judgments against the VELS - English (secondary)

School no: 7900

School name: Healesville High School

Source of data: Data retrieved electronically from CASES21.

Explanation: Teacher judgments of student achievement against the VELS.

Notes: * The school trendline is only plotted when there is data for each calendar year.

** In 2006, approx. 850 schools assessed their students against the 0.25 VELS scale. 2006 benchmarks are therefore based on a subset of schools.

^ The cutoff between grades A and B changed in 2007. Further information is available on the following website: <http://www.education.vic.gov.au/studentlearning/studentreports/schools/whatsnew.htm>.

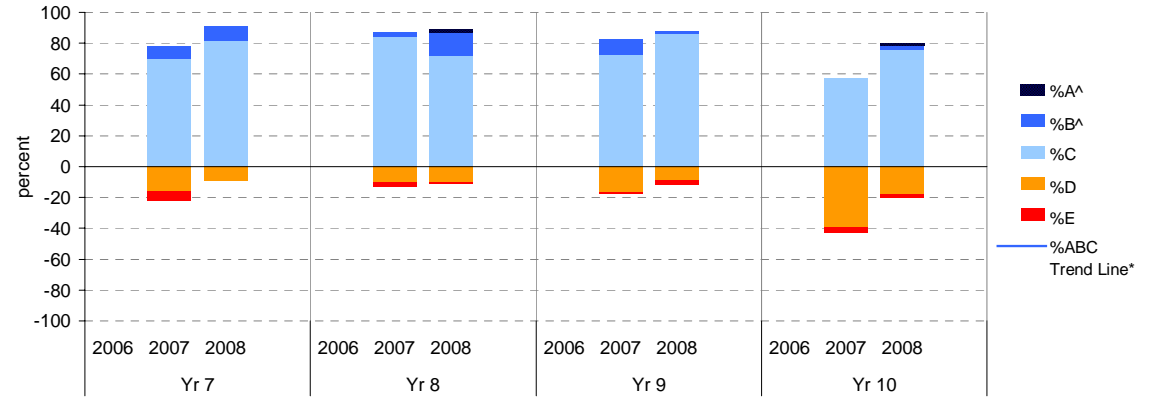
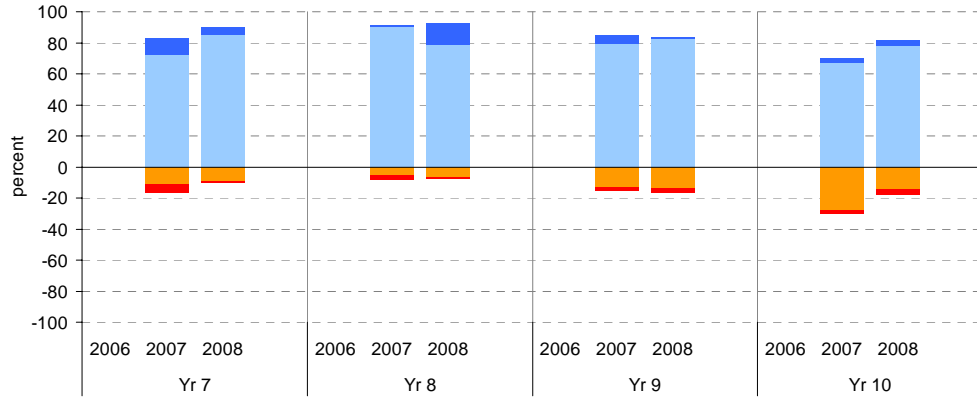
^^ 2008 benchmarks and percentiles will be calculated in August, when data from all schools has been submitted.

Reading

	total students	% of students by grade					Mean Score		total students		total students	% of students by grade					Mean Score	
		A^	B^	C	D	E	School	State**				A^	B^	C	D	E	School	State**
Yr 7	2006						4.33	4.32	2006						5.26			
	2007	83	0	11	72	11	6	4.33	4.39	2007	91	0	5	79	13	2	5.31	5.36
	2008	88	0	5	85	9	1	4.43		2008	67	0	1	82	13	3	5.31	
Yr 8	2006						4.78		2006						5.77			
	2007	70	0	1	90	6	3	4.84	4.85	2007	76	0	3	67	28	3	5.73	5.85
	2008	79	0	14	78	6	1	4.93		2008	83	0	4	78	14	4	5.81	

Writing

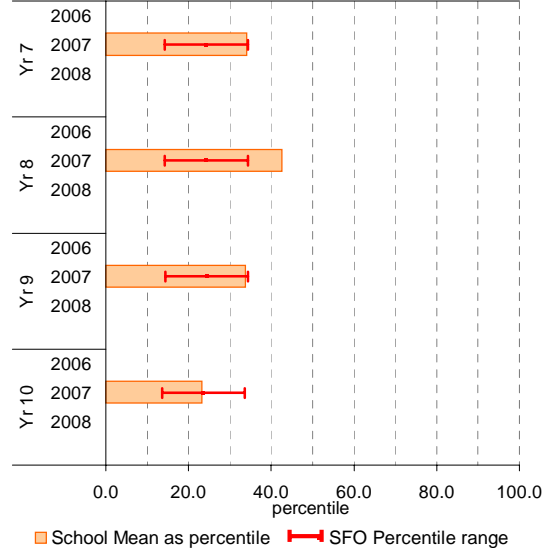
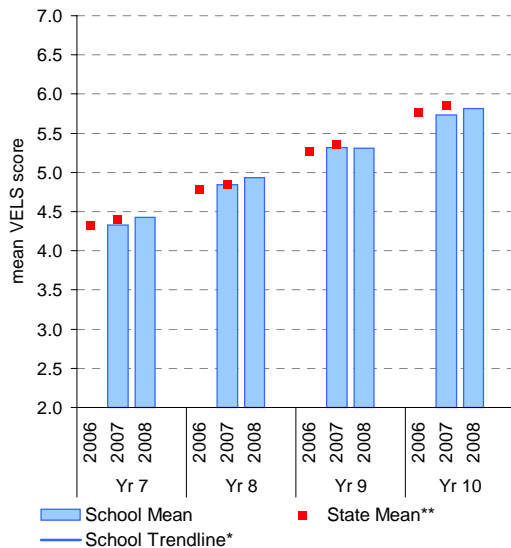
	total students	% of students by grade					Mean Score		total students		total students	% of students by grade					Mean Score	
		A^	B^	C	D	E	School	State**				A^	B^	C	D	E	School	State**
Yr 7	2006						4.28	4.28	2006						5.25			
	2007	82	0	9	70	16	6	4.28	4.36	2007	91	0	10	73	16	1	5.35	5.34
	2008	88	0	9	82	9	0	4.43		2008	66	0	2	86	9	3	5.31	
Yr 8	2006						4.75		2006						5.75			
	2007	70	0	3	84	10	3	4.82	4.83	2007	77	0	0	57	39	4	5.63	5.83
	2008	79	1	15	72	10	1	4.93		2008	83	1	2	76	18	2	5.79	



Reading

School Mean against State Mean^^

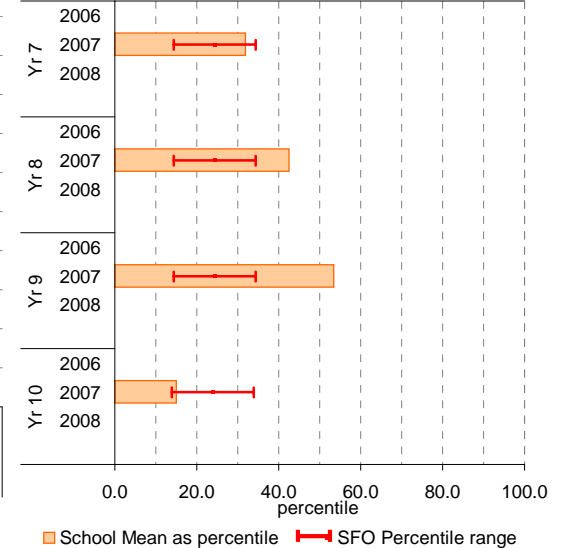
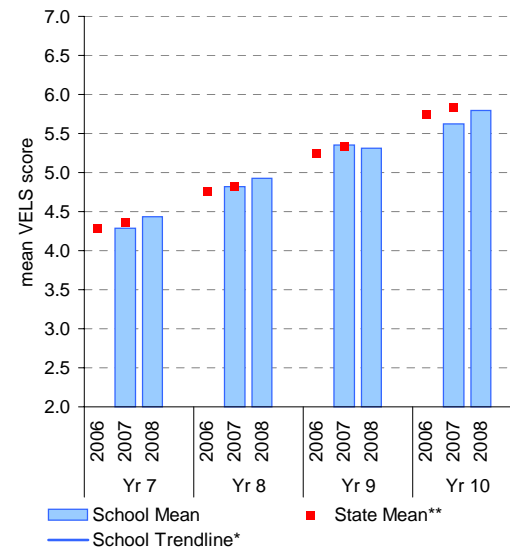
School Mean as percentile against SFO percentile range^^



Writing

School Mean against State Mean^^

School Mean as percentile against SFO percentile range^^



Teacher Judgments against the VELS - English (secondary)

School no: 7900

School name: Healesville High School

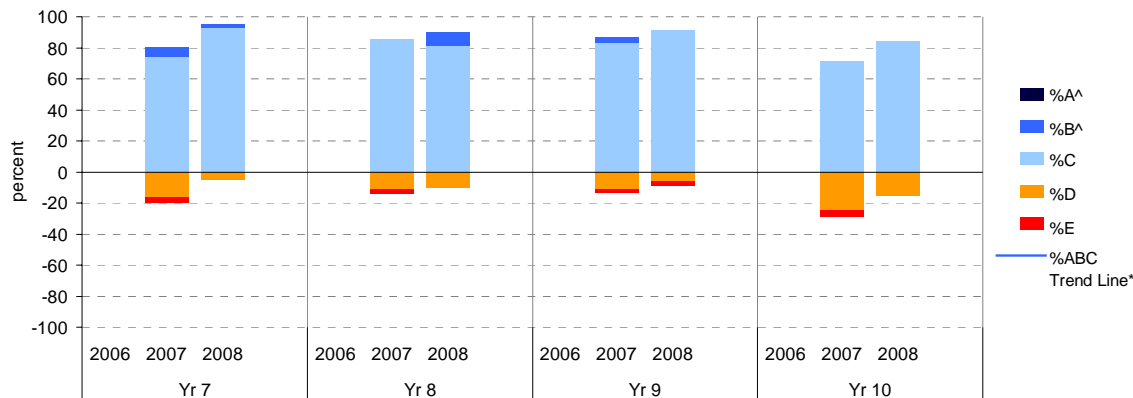
Source of data: Data retrieved electronically from CASES21.

Explanation: Teacher judgments of student achievement against the VELS.

Notes: * The school trendline is only plotted when there is data for each calendar year.
 ** In 2006, approx. 850 schools assessed their students against the 0.25 VELS scale. 2006 benchmarks are therefore based on a subset of schools.
 ^ The cutoff between grades A and B changed in 2007. Further information is available on the following website: <http://www.education.vic.gov.au/studentlearning/studentreports/schools/whatsnew.htm>.
 ^^ 2008 benchmarks and percentiles will be calculated in August, when data from all schools has been submitted.

Speaking and Listening

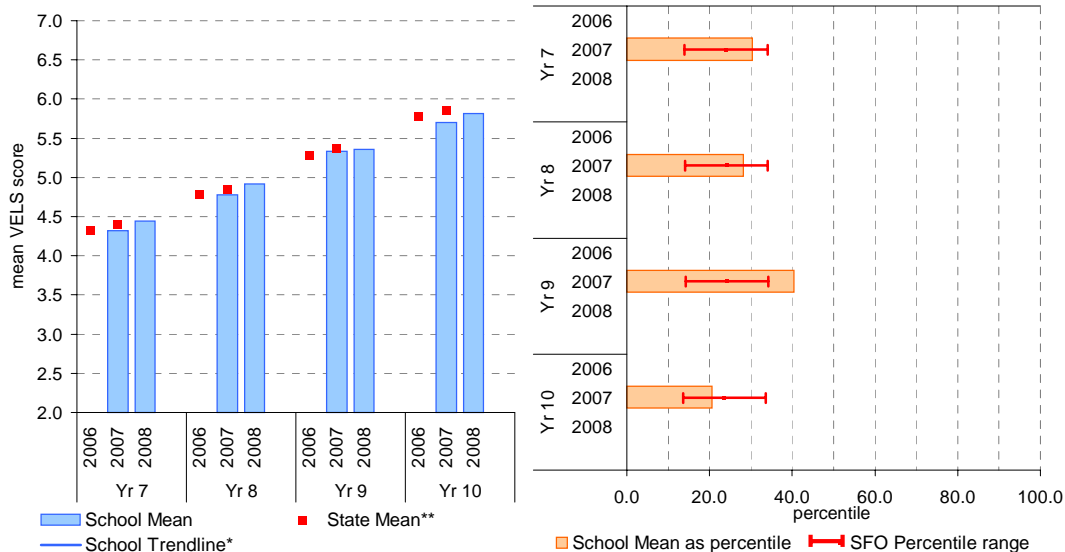
	total students	% of students by grade					Mean Score		total students	% of students by grade	Mean Score							
		A^	B^	C	D	E	School	State**			School	State**						
Yr 7	2006						4.32	4.33	2006			5.28						
	2007	82	0	6	74	16	4	4.32	4.39	2007	91	0	3	84	11	2	5.33	5.36
	2008	88	0	2	93	5	0	4.44		2008	67	0	0	91	6	3	5.36	
Yr 8	2006						4.78	4.79	2006			5.78						
	2007	70	0	0	86	11	3	4.78	4.85	2007	76	0	0	71	25	4	5.70	5.85
	2008	79	0	9	81	10	0	4.92		2008	83	0	0	84	16	0	5.81	



Speaking and Listening

School Mean against State Mean^^

School Mean as percentile against SFO percentile range^^



Teacher Judgments against the VELS - Mathematics (secondary)

School no: 7900

School name: Healesville High School

Source of data: Data retrieved electronically from CASES21.

Explanation: Teacher judgments of student achievement against the VELS.

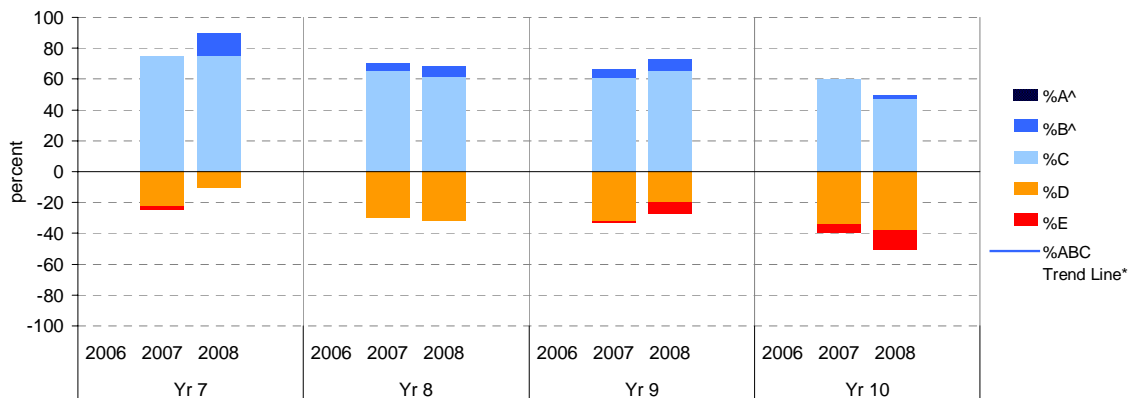
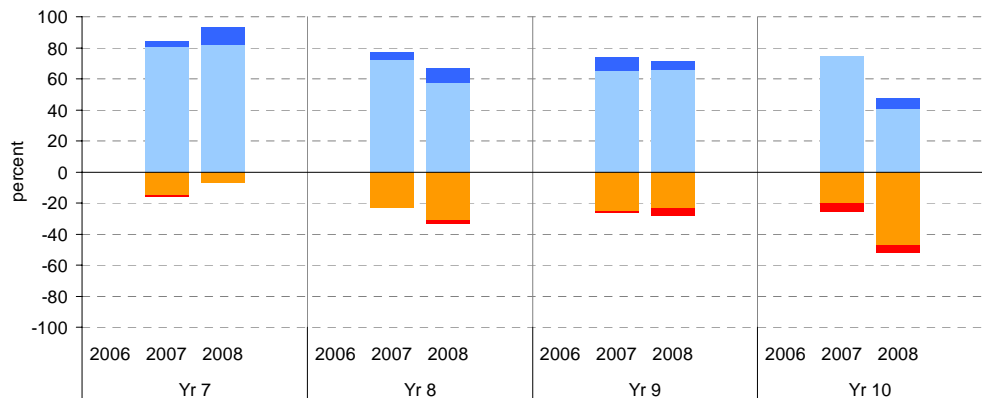
Notes: * The school trendline is only plotted when there is data for each calendar year.
 ** In 2006, approx. 850 schools assessed their students against the 0.25 VELS scale. 2006 benchmarks are therefore based on a subset of schools.
 ^ The cutoff between grades A and B changed in 2007. Further information is available on the following website: <http://www.education.vic.gov.au/studentlearning/studentreports/schools/whatsnew.htm>.
 ^^ 2008 benchmarks and percentiles will be calculated in August, when data from all schools has been submitted.

Measurement, Chance and Data

	total students	% of students by grade					Mean Score		total students		total students	% of students by grade					Mean Score	
		A^	B^	C	D	E	School	State**				A^	B^	C	D	E	School	State**
Yr 7	2006						4.32	4.31	2006						5.24	5.24		
	2007	82	0	4	80	15	1	4.32	4.40	2007	91	0	9	65	25	1	5.32	5.34
	2008	88	0	11	82	7	0	4.43		2008	67	0	6	66	24	4	5.24	
Yr 8	2006						4.78	4.78	2006						5.66	5.66		
	2007	69	0	4	72	23	0	4.82	4.83	2007	78	0	0	74	21	5	5.74	5.76
	2008	78	0	9	58	31	3	4.79		2008	86	0	7	41	48	5	5.58	
Yr 9	2006						5.24	5.24	2006						5.66	5.66		
	2007	91	0	9	65	25	1	5.32	5.34	2007	78	0	0	74	21	5	5.74	5.76
	2008	67	0	6	66	24	4	5.24		2008	86	0	7	41	48	5	5.58	
Yr 10	2006						5.66	5.66	2006						5.66	5.66		
	2007	78	0	0	74	21	5	5.74	5.76	2007	78	0	0	74	21	5	5.74	5.76
	2008	86	0	7	41	48	5	5.58		2008	86	0	7	41	48	5	5.58	

Structure

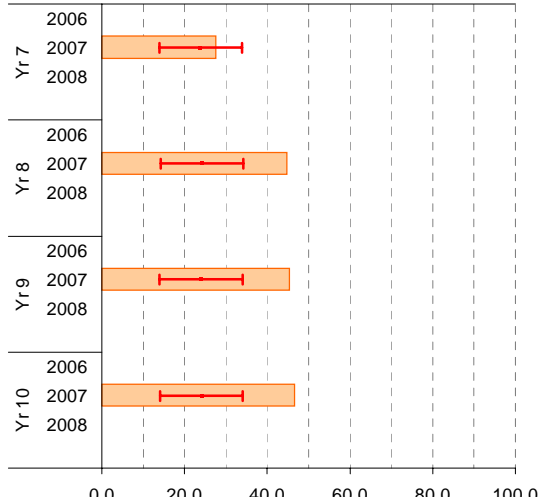
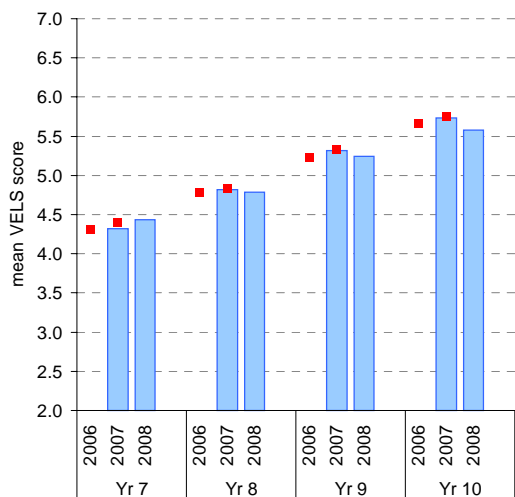
	total students	% of students by grade					Mean Score		total students		total students	% of students by grade					Mean Score	
		A^	B^	C	D	E	School	State**				A^	B^	C	D	E	School	State**
Yr 7	2006						4.30	4.30	2006						5.21	5.21		
	2007	81	0	0	75	22	2	4.27	4.39	2007	90	0	6	61	32	1	5.28	5.29
	2008	88	0	15	75	10	0	4.40		2008	67	0	7	66	19	7	5.21	
Yr 8	2006						4.74	4.74	2006						5.60	5.60		
	2007	70	0	4	66	30	0	4.76	4.82	2007	78	0	0	60	35	5	5.66	5.72
	2008	78	0	6	62	32	0	4.76		2008	87	0	2	47	38	13	5.57	
Yr 9	2006						5.21	5.21	2006						5.21	5.21		
	2007	90	0	6	61	32	1	5.28	5.29	2007	90	0	6	61	32	1	5.28	5.29
	2008	67	0	7	66	19	7	5.21		2008	67	0	7	66	19	7	5.21	
Yr 10	2006						5.60	5.60	2006						5.60	5.60		
	2007	78	0	0	60	35	5	5.66	5.72	2007	78	0	0	60	35	5	5.66	5.72
	2008	87	0	2	47	38	13	5.57		2008	87	0	2	47	38	13	5.57	



Measurement, Chance and Data

School Mean against State Mean^^

School Mean as percentile against SFO percentile range^^



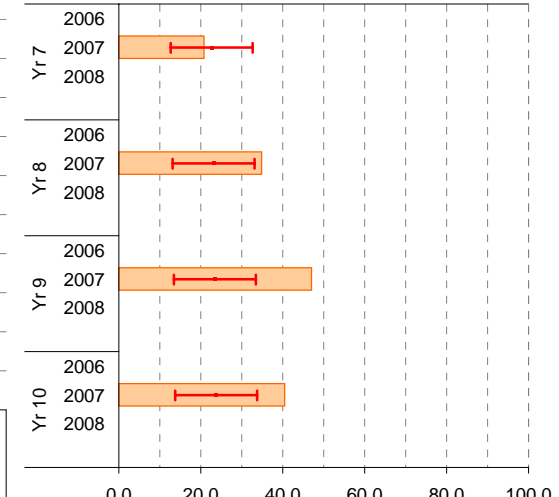
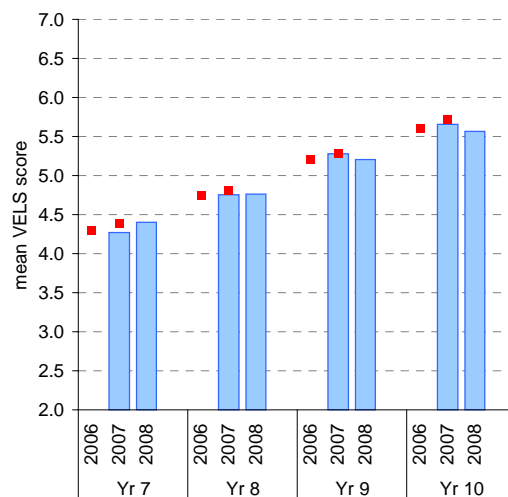
■ School Mean
 ■ State Mean**

■ School Mean as percentile
 ⇨ SFO Percentile range

Structure

School Mean against State Mean^^

School Mean as percentile against SFO percentile range^^



■ School Mean
 ■ State Mean**

■ School Mean as percentile
 ⇨ SFO Percentile range

Teacher Judgments against the VELS - English (secondary)

School no: 7900
School name: Healesville High School
Source of data: Data retrieved electronically from CASES21.
Explanation: Teacher judgments of student achievement against the VELS.

Reading

Year Level	Year	Total ¹	Assessed ²	Level 1			Level 2			Level 3			Level 4			Level 5			Level 6			Level 6E			School mean	State mean [^]	Difference between school and state mean [^]					
				0.00	0.50	1.00	1.25	1.50	1.75	2.00	2.25	2.50	2.75	3.00	3.25	3.50	3.75	4.00	4.25	4.50	4.75	5.00	5.25	5.50				5.75	6.00	6.25	6.50	6.75
yr7	2008	88	88										1	3	5	7	68	4											4.43			
yr7	2007	84	83									1				1	3	1	8	22	38	9								4.33	4.39	-0.06
yr8	2008	79	79																											4.93		
yr7	2006																														4.32	
yr8	2007	72	70									1																		4.84	4.85	-0.01
yr9	2008	67	67										1																	5.31		
yr7	2005																															
yr8	2006																														4.78	
yr9	2007	91	91													1	1	1	11	39	33	5								5.31	5.36	-0.05
yr10	2008	85	83																											5.81		
yr8	2005																															
yr9	2006																														5.26	
yr10	2007	78	76													1														5.73	5.85	-0.11
yr9	2005																															
yr10	2006																														5.77	
yr10	2005																															

shading indicates a 'C' grade (at the expected standard) on the VELS scale.

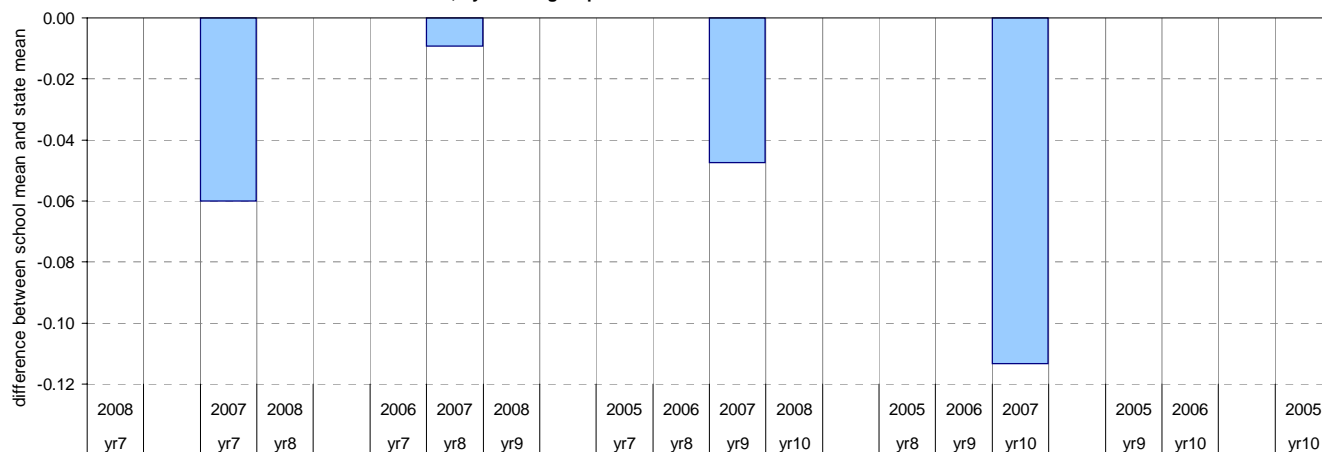
¹ The total number of students eligible to be assessed. This figure will typically match, or be very close to, the Year Level enrolment.

² The number of students assessed against the VELS. The difference between this figure and the total (1) should be accounted for by students assessed against Individual Learning Plans and/or the ESL companion in the case of English.

* In 2006, approx. 850 schools assessed their students against the 0.25 VELS scale. 2006 benchmarks are therefore based on a subset of schools.

[^] 2008 benchmarks will be calculated in August, when data from all schools has been submitted.

Difference between school mean and state mean[^], by cohort group



Teacher Judgments against the VELS - English (secondary)

School no: 7900
School name: Healesville High School
Source of data: Data retrieved electronically from CASES21.
Explanation: Teacher judgments of student achievement against the VELS.

Writing

Year Level	Year	Total ¹	Assessed ²	Level 1			Level 2			Level 3			Level 4			Level 5			Level 6			Level 6E			School mean	State mean [^]	Difference between school and state mean [^]			
				0.00	0.50	1.00	1.25	1.50	1.75	2.00	2.25	2.50	2.75	3.00	3.25	3.50	3.75	4.00	4.25	4.50	4.75	5.00	5.25	5.50				5.75	6.00	6.25
yr7	2008	88	88										1	7	14	58	8											4.43		
yr7	2007	84	82				1						4	3	10	20	37	7										4.28	4.36	-0.08
yr8	2008	79	79											1		8	17	40	12	1								4.93		
yr7	2006																											4.28		
yr8	2007	72	70						1				1		1	6	20	39	2									4.82	4.83	0.00
yr9	2008	67	66									1			1		1	5	21	36	1							5.31		
yr7	2005																													
yr8	2006																											4.75		
yr9	2007	91	91												1	15			28	38	9						5.35	5.34	0.02	
yr10	2008	85	83													2			4	11	32	31	2	1			5.79			
yr8	2005																													
yr9	2006																											5.25		
yr10	2007	78	77												1	1	1		9	21	28	16					5.63	5.83	-0.20	
yr9	2005																													
yr10	2006																											5.75		
yr10	2005																													

shading indicates a 'C' grade (at the expected standard) on the VELS scale.

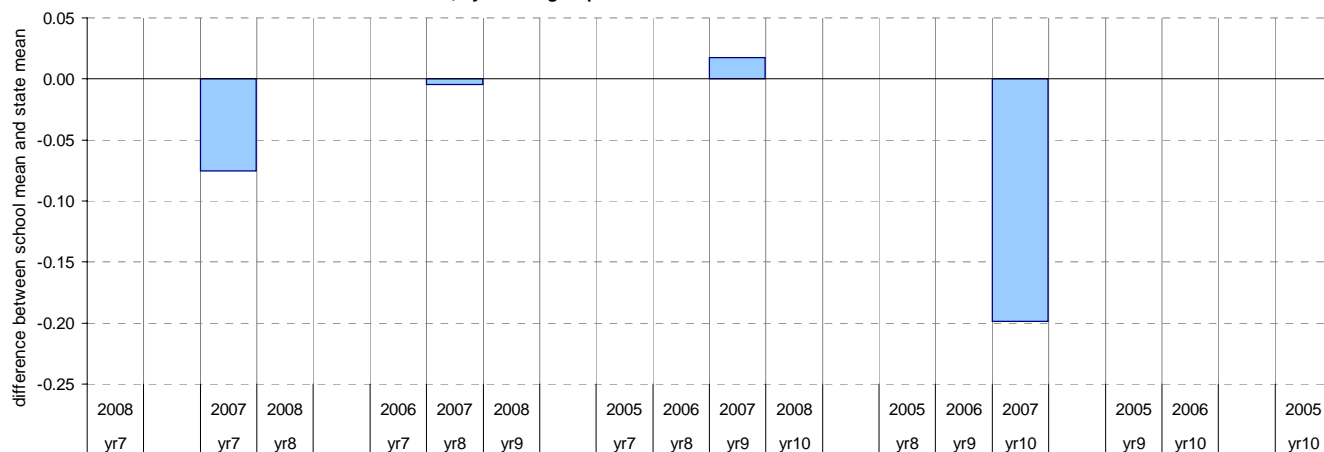
¹ The total number of students eligible to be assessed. This figure will typically match, or be very close to, the Year Level enrolment.

² The number of students assessed against the VELS. The difference between this figure and the total (1) should be accounted for by students assessed against Individual Learning Plans and/or the ESL companion in the case of English.

* In 2006, approx. 850 schools assessed their students against the 0.25 VELS scale. 2006 benchmarks are therefore based on a subset of schools.

[^] 2008 benchmarks will be calculated in August, when data from all schools has been submitted.

Difference between school mean and state mean[^], by cohort group



Teacher Judgments against the VELS - English (secondary)

School no: 7900
School name: Healesville High School
Source of data: Data retrieved electronically from CASES21.
Explanation: Teacher judgments of student achievement against the VELS.

Speaking and Listening

Year Level	Year	Total ¹	Assessed ²	Level 1			Level 2			Level 3			Level 4			Level 5			Level 6			Level 6E			School mean	State mean [^]	Difference between school and state mean [^]			
				0.00	0.50	1.00	1.25	1.50	1.75	2.00	2.25	2.50	2.75	3.00	3.25	3.50	3.75	4.00	4.25	4.50	4.75	5.00	5.25	5.50				5.75	6.00	6.25
yr7	2008	88	88										4			14	68	2										4.44		
yr7	2007	84	82									1	2	3	10	22	39	5										4.32	4.39	-0.07
yr8	2008	79	79													8	17	47		7								4.92		
yr7	2006																											4.33		
yr8	2007	72	70									2				8	34	26									4.78	4.85	-0.07	
yr9	2008	67	67										1	1					4	17	44						5.36			
yr7	2005																													
yr8	2006																											4.79		
yr9	2007	91	91											1		1		10	35	41	3						5.33	5.36	-0.03	
yr10	2008	85	83																8	5	28	42					5.81			
yr8	2005																													
yr9	2006																											5.28		
yr10	2007	78	76										1			1		1	7	12	28	26					5.70	5.85	-0.15	
yr9	2005																													
yr10	2006																											5.78		
yr10	2005																													

shading indicates a 'C' grade (at the expected standard) on the VELS scale.

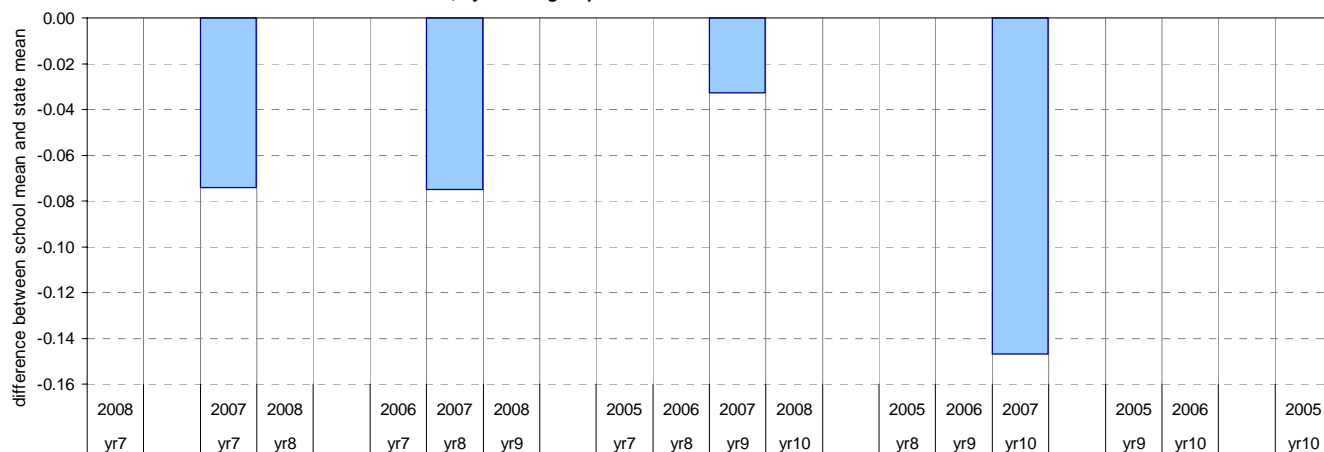
¹ The total number of students eligible to be assessed. This figure will typically match, or be very close to, the Year Level enrolment.

² The number of students assessed against the VELS. The difference between this figure and the total (1) should be accounted for by students assessed against Individual Learning Plans and/or the ESL companion in the case of English.

* In 2006, approx. 850 schools assessed their students against the 0.25 VELS scale. 2006 benchmarks are therefore based on a subset of schools.

[^] 2008 benchmarks will be calculated in August, when data from all schools has been submitted.

Difference between school mean and state mean[^], by cohort group



Teacher Judgments against the VELS - Mathematics (secondary)

School no: 7900
School name: Healesville High School
Source of data: Data retrieved electronically from CASES21.
Explanation: Teacher judgments of student achievement against the VELS.

Measurement, Chance and Data

Year Level	Year	Total ¹	Assessed ²	Level 1			Level 2			Level 3			Level 4			Level 5			Level 6			Level 6E			School mean	State mean [^]	Difference between school and state mean [^]			
				0.00	0.50	1.00	1.25	1.50	1.75	2.00	2.25	2.50	2.75	3.00	3.25	3.50	3.75	4.00	4.25	4.50	4.75	5.00	5.25	5.50				5.75	6.00	6.25
yr7	2008	89	88										1	5		21	51	10										4.43		
yr7	2007	84	82										1	5	7	30	36	3										4.32	4.40	-0.08
yr8	2008	78	78												2	3	21	15	30		7							4.79		
yr7	2006																											4.31		
yr8	2007	72	69													4	12	17	33		3						4.82	4.83	-0.02	
yr9	2008	69	67									1				2	4	12		19	25	4					5.24			
yr7	2005																													
yr8	2006																											4.78		
yr9	2007	92	91													1	2	21		23	36	8					5.32	5.34	-0.02	
yr10	2008	87	86														3	1		29	12	22	13		6		5.58			
yr8	2005																													
yr9	2006																											5.24		
yr10	2007	78	78													2	2		4	12	28	30					5.74	5.76	-0.02	
yr9	2005																													
yr10	2006																											5.66		
yr10	2005																													

shading indicates a 'C' grade (at the expected standard) on the VELS scale.

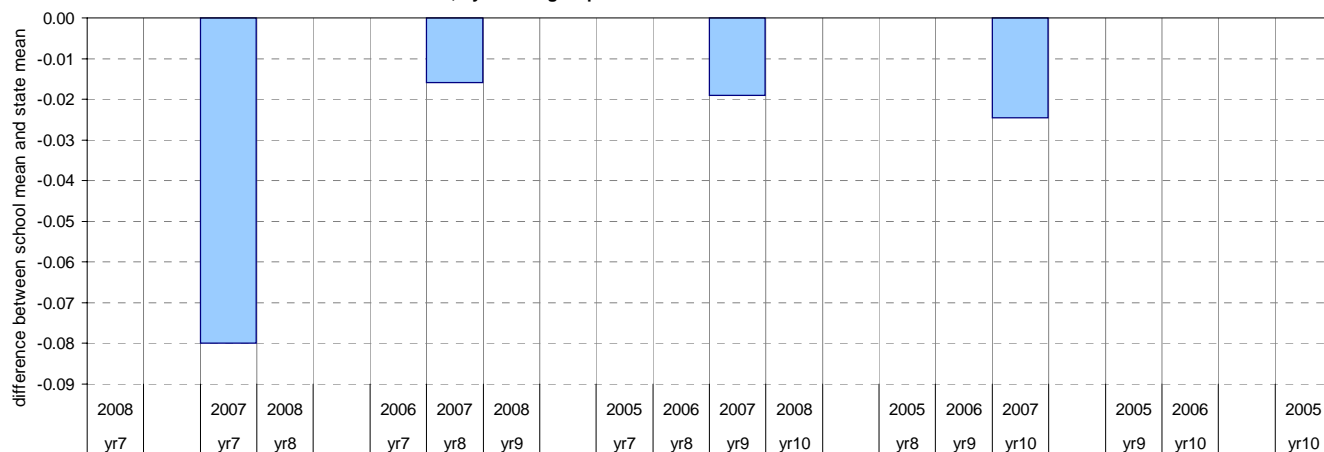
¹ The total number of students eligible to be assessed. This figure will typically match, or be very close to, the Year Level enrolment.

² The number of students assessed against the VELS. The difference between this figure and the total (1) should be accounted for by students assessed against Individual Learning Plans and/or the ESL companion in the case of English.

* In 2006, approx. 850 schools assessed their students against the 0.25 VELS scale. 2006 benchmarks are therefore based on a subset of schools.

[^] 2008 benchmarks will be calculated in August, when data from all schools has been submitted.

Difference between school mean and state mean[^], by cohort group



Teacher Judgments against the VELS - Mathematics (secondary)

School no: 7900
School name: Healesville High School
Source of data: Data retrieved electronically from CASES21.
Explanation: Teacher judgments of student achievement against the VELS.

Structure

Year Level	Year	Total ¹	Assessed ²	Level 1				Level 2				Level 3				Level 4				Level 5				Level 6				Level 6E			School mean	State mean [^]	Difference between school and state mean [^]						
				0.00	0.50	1.00	1.25	1.50	1.75	2.00	2.25	2.50	2.75	3.00	3.25	3.50	3.75	4.00	3.25	3.50	3.75	4.00	4.25	4.50	4.75	5.00	5.25	5.50	5.75	6.00				6.25	6.50	6.75			
yr7	2008	89	88												1	8					28	38	13										4.40						
yr7	2007	84	81												2	18					30	31											4.27	4.39	-0.12				
yr8	2008	78	78																		7	18	22	26		5							4.76						
yr7	2006																																	4.30					
yr8	2007	72	70																		7	14	22	24		3							4.76	4.82	-0.06				
yr9	2008	69	67										1								4	4	9		27	17	5						5.21						
yr7	2005																																						
yr8	2006																																		4.74				
yr9	2007	92	90																		1	3	26		20	35	5						5.28	5.29	-0.01				
yr10	2008	87	87																			2	9		15	18	26	15	2					5.57					
yr8	2005																																						
yr9	2006																																			5.21			
yr10	2007	78	78																		1	2	1		6	21	27	20						5.66	5.72	-0.06			
yr9	2005																																						
yr10	2006																																				5.60		
yr10	2005																																						

shading indicates a 'C' grade (at the expected standard) on the VELS scale.

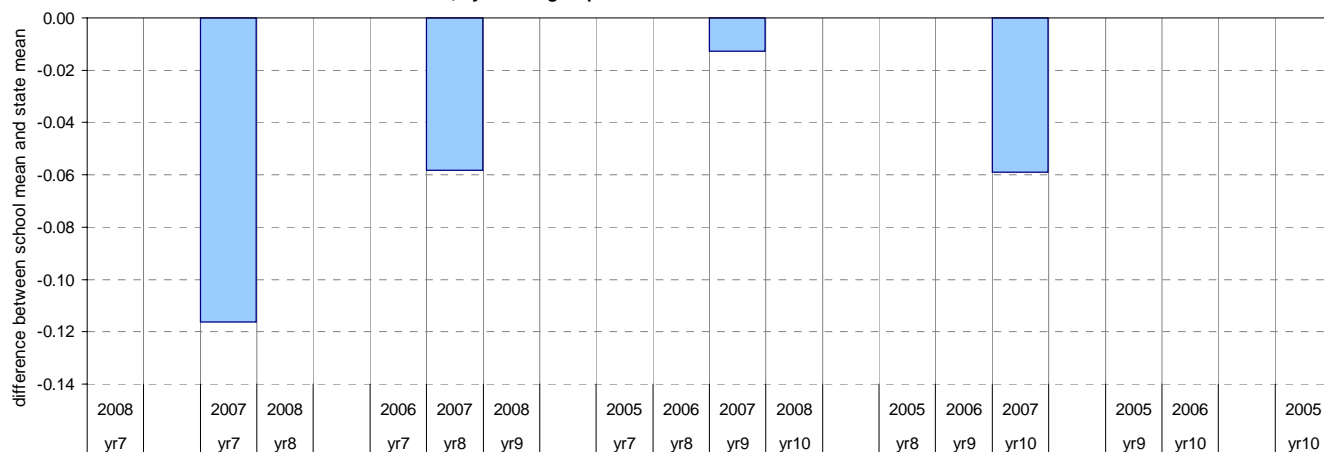
¹ The total number of students eligible to be assessed. This figure will typically match, or be very close to, the Year Level enrolment.

² The number of students assessed against the VELS. The difference between this figure and the total (1) should be accounted for by students assessed against Individual Learning Plans and/or the ESL companion in the case of English.

* In 2006, approx. 850 schools assessed their students against the 0.25 VELS scale. 2006 benchmarks are therefore based on a subset of schools.

[^] 2008 benchmarks will be calculated in August, when data from all schools has been submitted.

Difference between school mean and state mean[^], by cohort group



NAPLAN Year 7 and 9: Reading

School no: 7900

School name: Healesville High School

Source of data: Victorian Curriculum and Assessment Authority.

Explanation: The National Assessment Program - Literacy and Numeracy (NAPLAN) is conducted each year for students in Years 3, 5, 7 and 9. For more detailed NAPLAN data, refer to the NAPLAN Data Service website at <http://naplands.vcaa.vic.edu.au>. A reference guide for analysing NAPLAN data is available at <http://www.vcaa.vic.edu.au/vcaa/prep10/naplan/schools/analysingnaplandata.pdf>.

Notes: * % student participation = (students who participated in NAPLAN / February enrolments) * 100

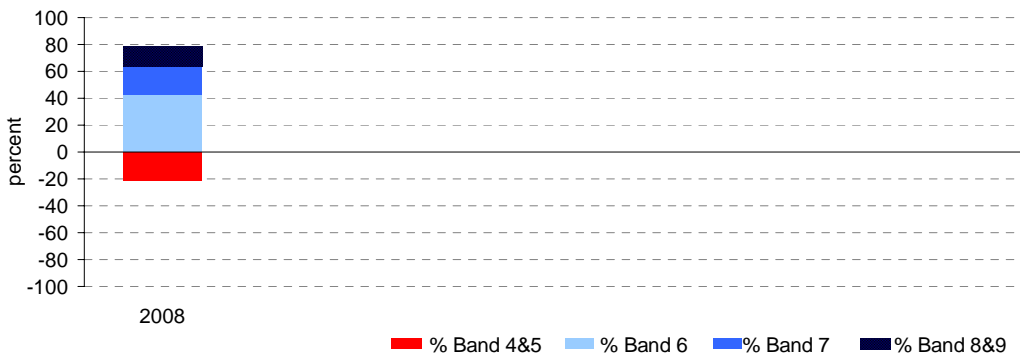
Year 7

	student participation		Percent of students by NAP Band						Mean Scaled Score	
	(n)	(%)*	Band 4	Band 5	Band 6	Band 7	Band 8	Band 9	School	State
2008	80	91	5	16	43	21	13	3	518.7	531.1

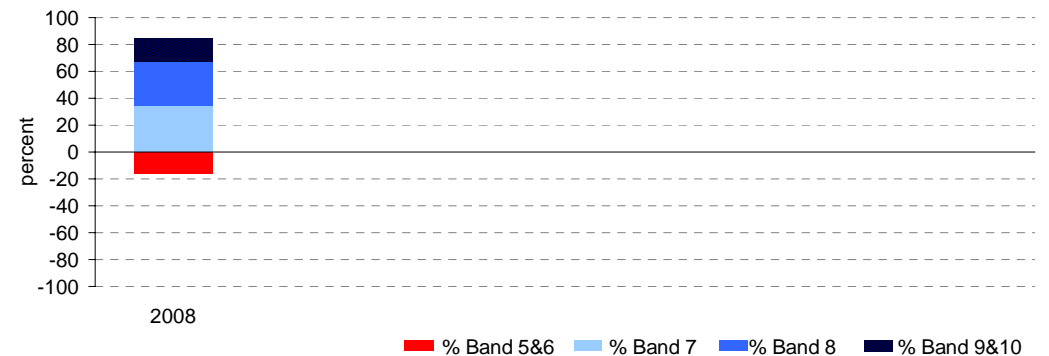
Year 9

	student participation		Percent of students by NAP Band						Mean Scaled Score	
	(n)	(%)*	Band 5	Band 6	Band 7	Band 8	Band 9	Band 10	School	State
2008	58	77	2	14	35	33	16	2	583.9	572.5

Percent of students by NAP Band

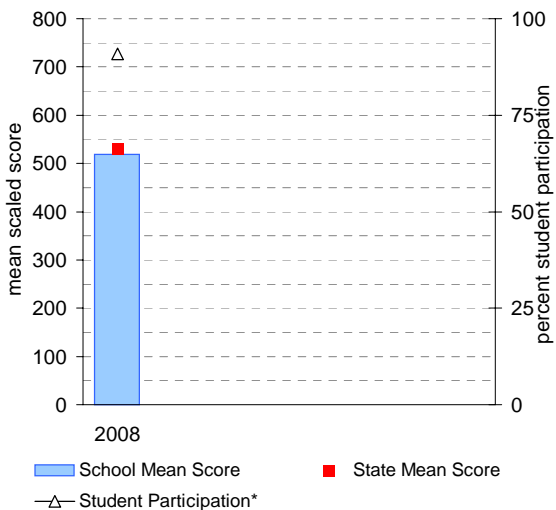


Percent of students by NAP Band

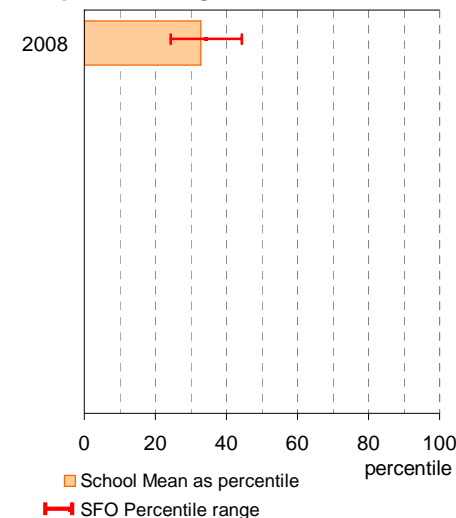


Year 7

School Mean against State Mean, including Participation

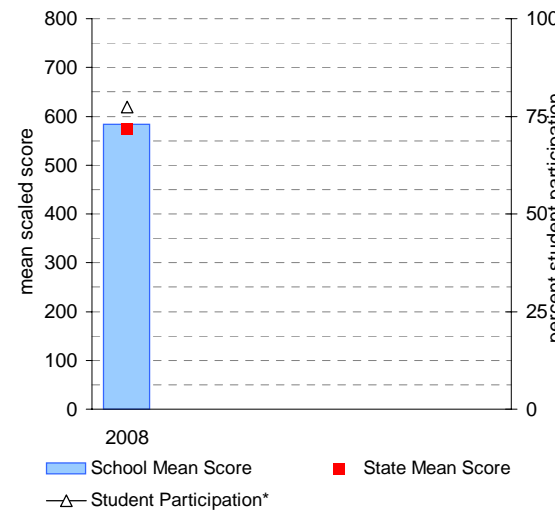


School Mean as percentile against SFO percentile range

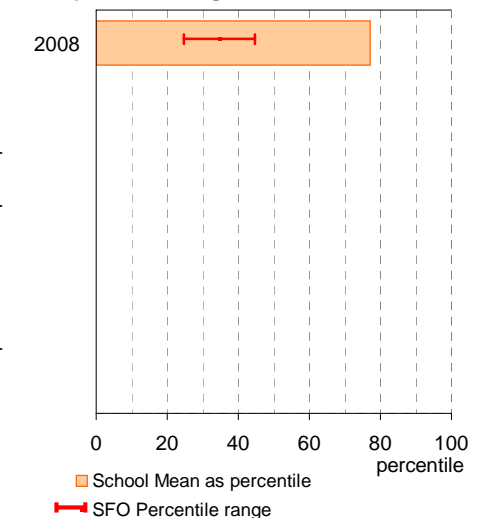


Year 9

School Mean against State Mean, including Participation



School Mean as percentile against SFO percentile range



NAPLAN Year 7 and 9: Writing

School no: 7900

School name: Healesville High School

Source of data: Victorian Curriculum and Assessment Authority.

Explanation: The National Assessment Program - Literacy and Numeracy (NAPLAN) is conducted each year for students in Years 3, 5, 7 and 9. For more detailed NAPLAN data, refer to the NAPLAN Data Service website at <http://naplands.vcaa.vic.edu.au>. A reference guide for analysing NAPLAN data is available at <http://www.vcaa.vic.edu.au/vcaa/prep10/naplan/schools/analysingnaplandata.pdf>.

Notes: * % student participation = (students who participated in NAPLAN / February enrolments) * 100

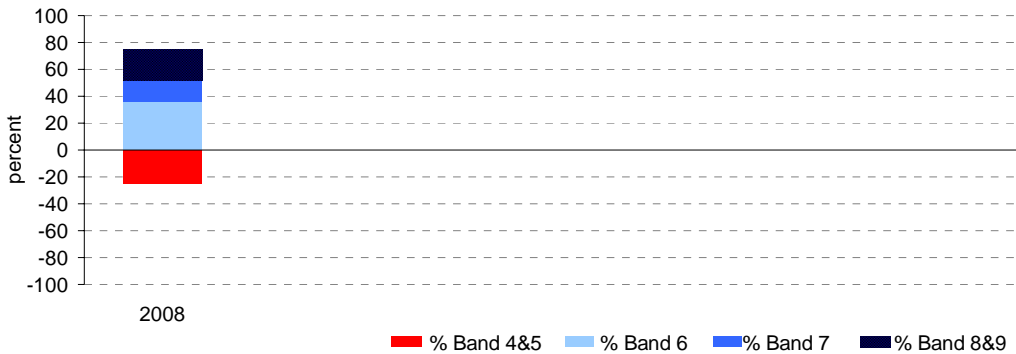
Year 7

	student participation		Percent of students by NAP Band						Mean Scaled Score	
	(n)	(%)*	Band 4	Band 5	Band 6	Band 7	Band 8	Band 9	School	State
2008	75	85	15	11	36	16	13	9	505.8	534.0

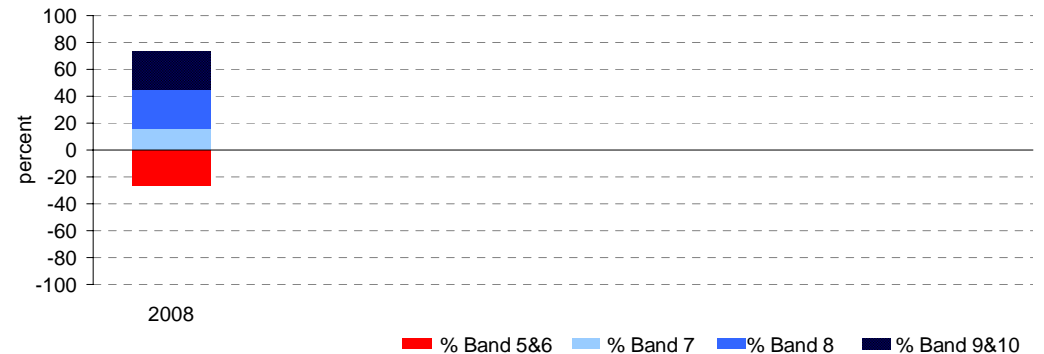
Year 9

	student participation		Percent of students by NAP Band						Mean Scaled Score	
	(n)	(%)*	Band 5	Band 6	Band 7	Band 8	Band 9	Band 10	School	State
2008	56	75	11	16	16	29	20	9	582.4	571.4

Percent of students by NAP Band

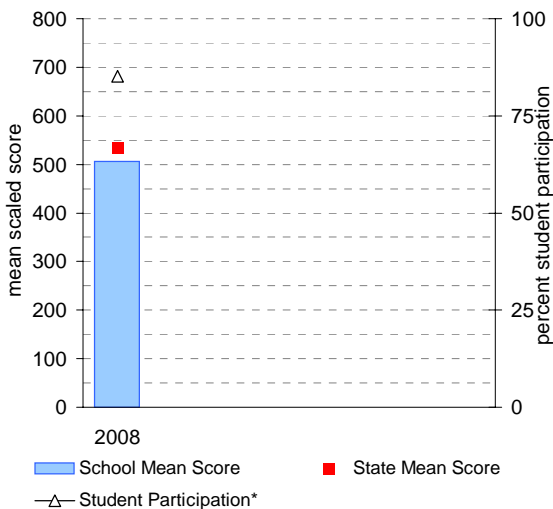


Percent of students by NAP Band

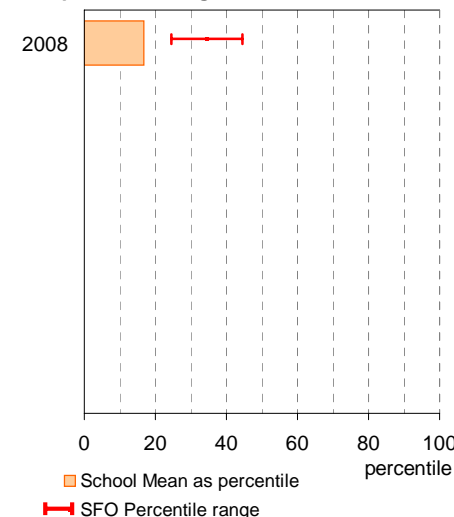


Year 7

School Mean against State Mean, including Participation

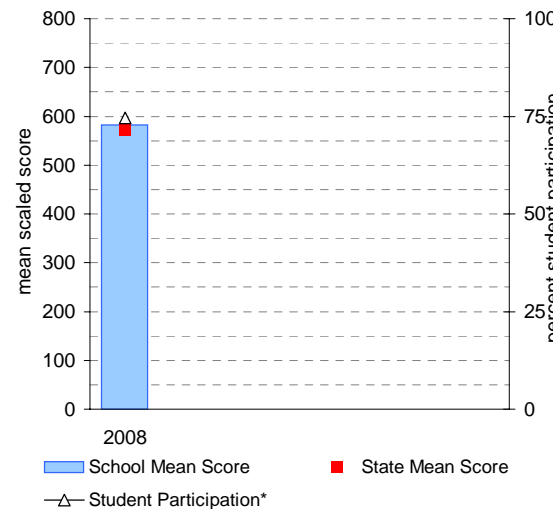


School Mean as percentile against SFO percentile range

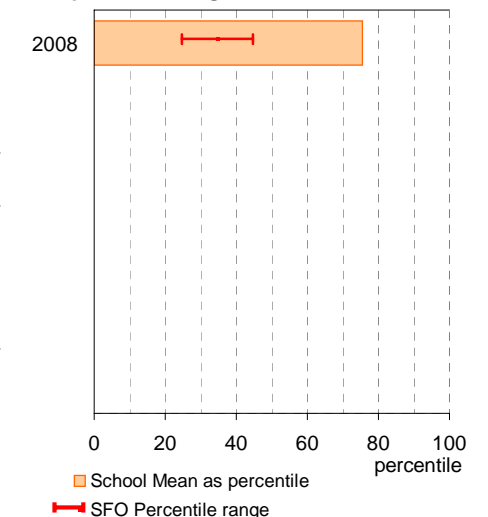


Year 9

School Mean against State Mean, including Participation



School Mean as percentile against SFO percentile range



NAPLAN Year 7 and 9: Numeracy

School no: 7900

School name: Healesville High School

Source of data: Victorian Curriculum and Assessment Authority.

Explanation: The National Assessment Program - Literacy and Numeracy (NAPLAN) is conducted each year for students in Years 3, 5, 7 and 9. For more detailed NAPLAN data, refer to the NAPLAN Data Service website at <http://naplands.vcaa.vic.edu.au>. A reference guide for analysing NAPLAN data is available at <http://www.vcaa.vic.edu.au/vcaa/prep10/naplan/schools/analysingnaplandata.pdf>.

Notes: * % student participation = (students who participated in NAPLAN / February enrolments) * 100

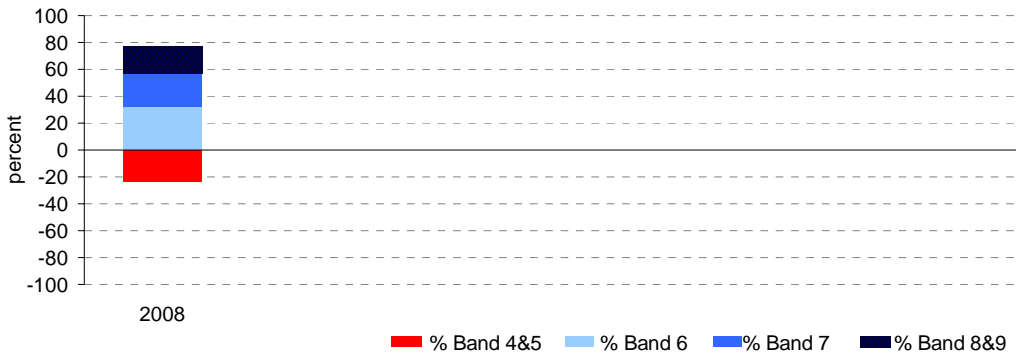
Year 7

	student participation		Percent of students by NAP Band						Mean Scaled Score	
	(n)	(%)*	Band 4	Band 5	Band 6	Band 7	Band 8	Band 9	School	State
2008	77	88	1	22	33	25	13	7	526.5	541.2

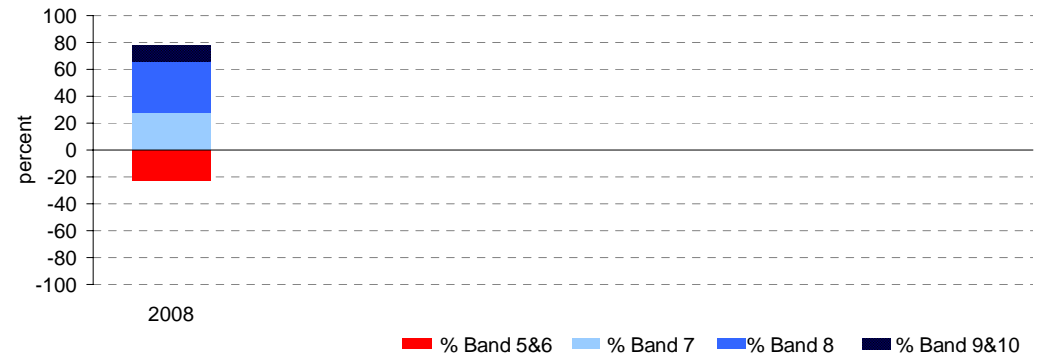
Year 9

	student participation		Percent of students by NAP Band						Mean Scaled Score	
	(n)	(%)*	Band 5	Band 6	Band 7	Band 8	Band 9	Band 10	School	State
2008	58	77	0	22	28	38	10	2	577.6	579.0

Percent of students by NAP Band

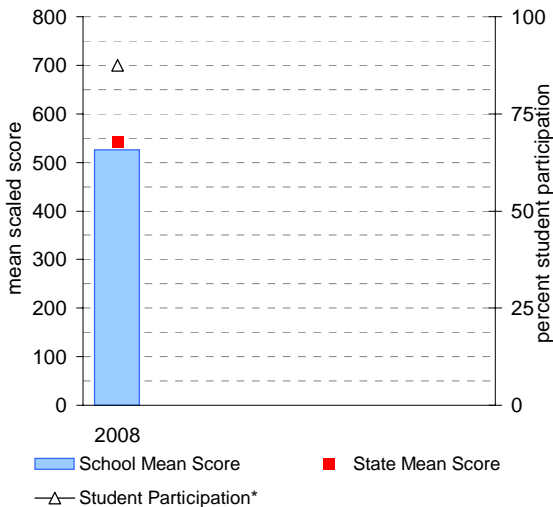


Percent of students by NAP Band

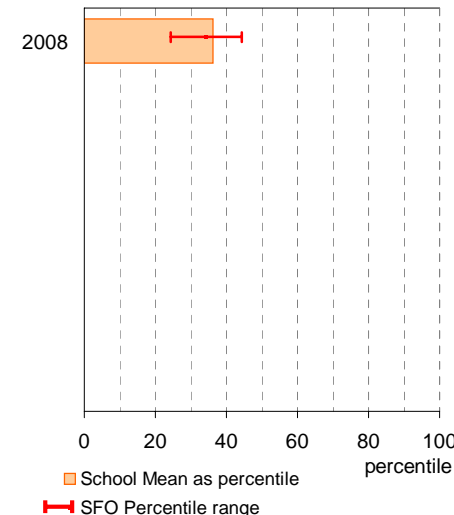


Year 7

School Mean against State Mean, including Participation

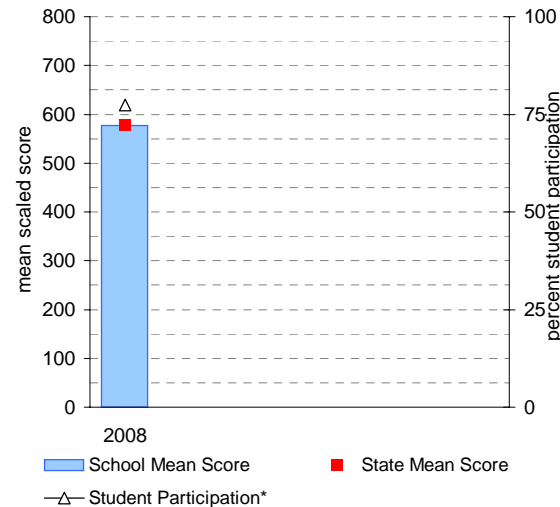


School Mean as percentile against SFO percentile range

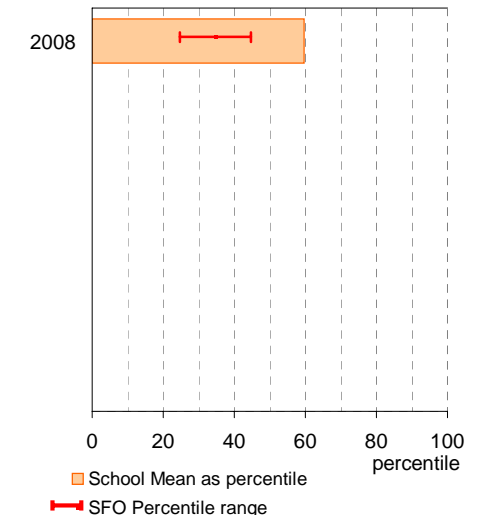


Year 9

School Mean against State Mean, including Participation



School Mean as percentile against SFO percentile range



AIM Year 7 and 9: Reading

School no: 7900

School name: Healesville High School

Source of data: Victorian Curriculum and Assessment Authority.

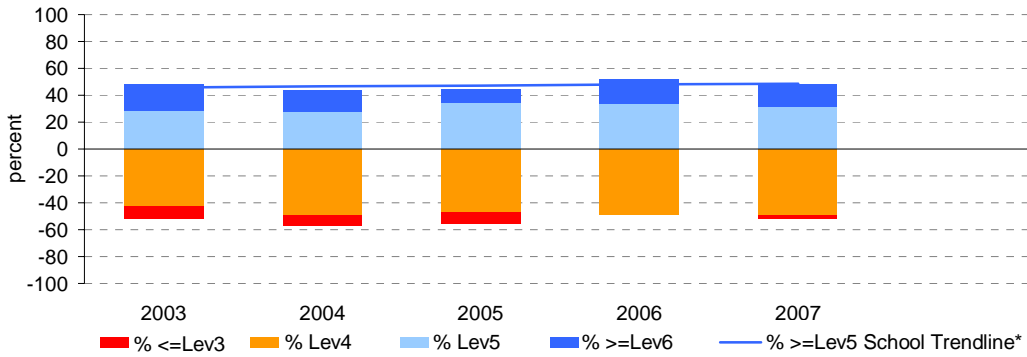
Explanation: The Achievement Improvement Monitor (AIM) was a statewide assessment program conducted each year up until and including 2007 for students in Years 3, 5, 7 and 9. This has now been replaced by NAPLAN. For more detailed AIM data, refer to the AIM Data Service website at <http://aimds.vcaa.vic.edu.au>.

Notes: * The school trendline is only plotted when there is data for each calendar year.
 ** % student participation = (students who participated in AIM / Feb enrolments) * 100

Year 7

	student participation		Percent of students by VELs level							Mean CSF / VELs Score	
	(n)	(%)**	Lev1	Lev2	Lev3	Lev4	Lev5	Lev6	Lev6E	School	State
2003	80	80	0	0	9	43	29	20	0	4.1	4.1
2004	90	83	0	0	8	49	28	16	0	4.0	4.2
2005	70	70	0	0	9	47	34	10	0	4.0	4.2
2006	56	79	0	0	0	48	34	18	0	4.3	4.2
2007	73	89	0	0	3	49	32	16	0	4.1	4.1

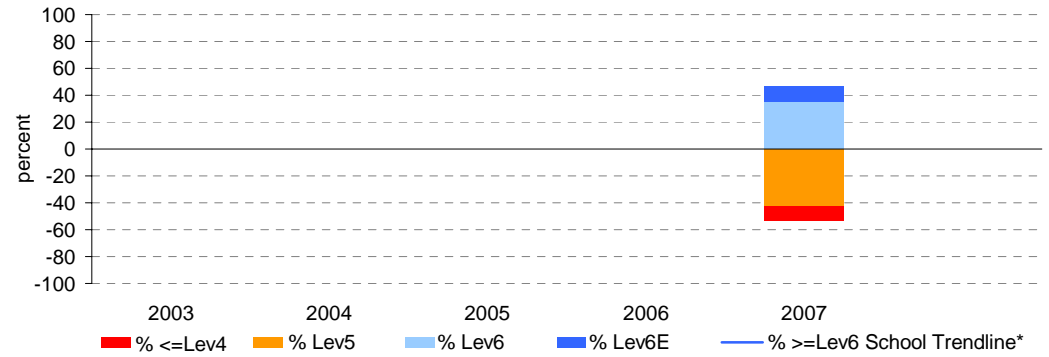
Percent of students by VELs level



Year 9

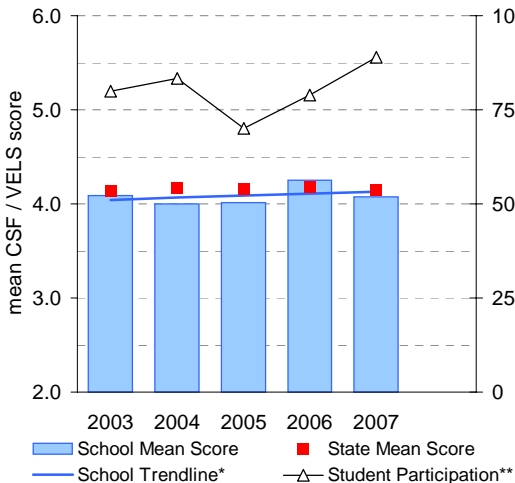
	student participation		Percent of students by VELs level							Mean CSF / VELs Score	
	(n)	(%)**	Lev1	Lev2	Lev3	Lev4	Lev5	Lev6	Lev6E	School	State
2003											
2004											
2005											
2006											5.1
2007	79	82	0	0	0	10	43	35	11	5.0	5.1

Percent of students by VELs level

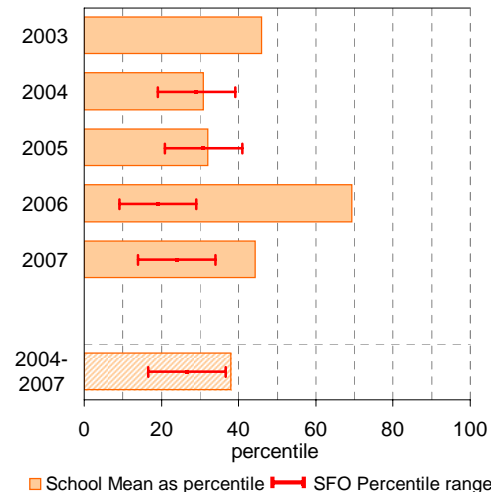


Year 7

School Mean against State Mean, including Participation

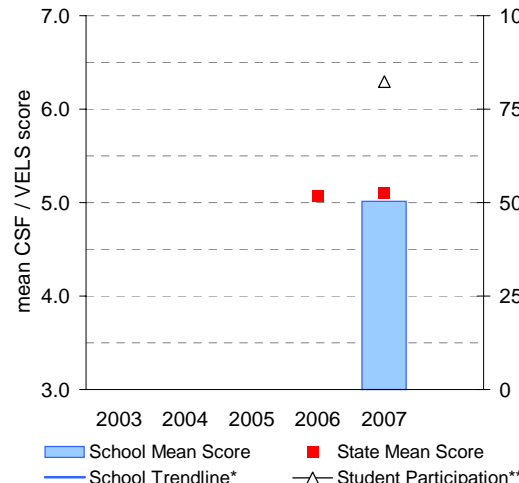


School Mean as percentile against SFO percentile range

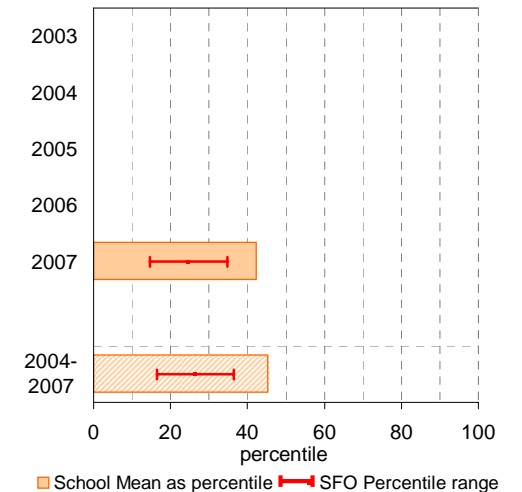


Year 9

School Mean against State Mean, including Participation



School Mean as percentile against SFO percentile range



AIM Year 7 and 9: Mathematics

School no: 7900

School name: Healesville High School

Source of data: Victorian Curriculum and Assessment Authority.

Explanation: The Achievement Improvement Monitor (AIM) was a statewide assessment program conducted each year up until and including 2007 for students in Years 3, 5, 7 and 9. This has now been replaced by NAPLAN. For more detailed AIM data, refer to the AIM Data Service website at <http://aimds.vcaa.vic.edu.au>.

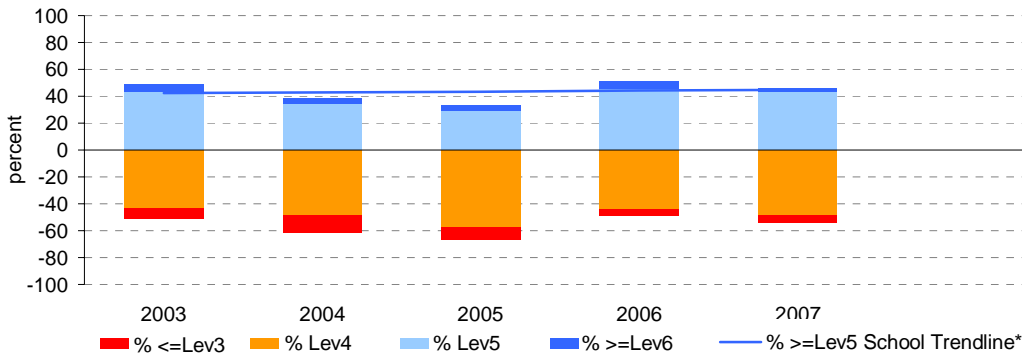
Notes: * The school trendline is only plotted when there is data for each calendar year.

** % student participation = (students who participated in AIM / Feb enrolments) * 100

Year 7

	student participation		Percent of students by VEL5 level							Mean CSF / VEL5 Score	
	(n)	(%)**	Lev1	Lev2	Lev3	Lev4	Lev5	Lev6	Lev6E	School	State
2003	76	76	0	0	8	43	43	5	0	4.0	4.0
2004	93	86	0	0	13	48	34	4	0	3.8	4.0
2005	78	78	0	0	9	58	29	4	0	3.8	4.0
2006	59	83	0	0	5	44	46	5	0	4.0	4.0
2007	72	88	0	0	6	49	43	3	0	3.9	4.1

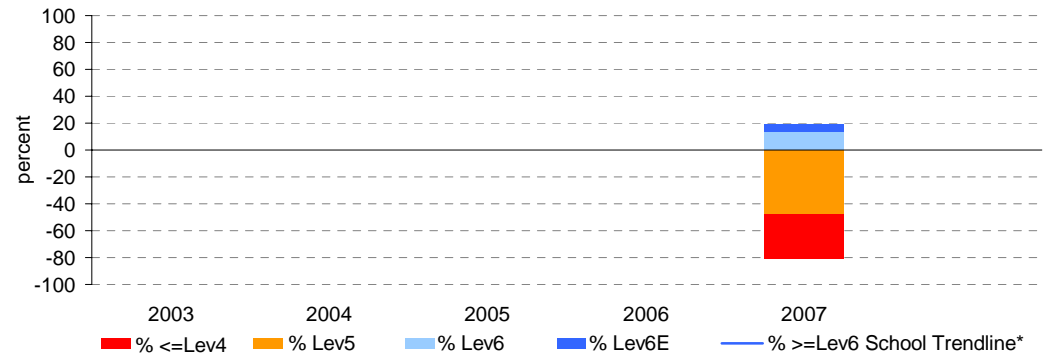
Percent of students by VEL5 level



Year 9

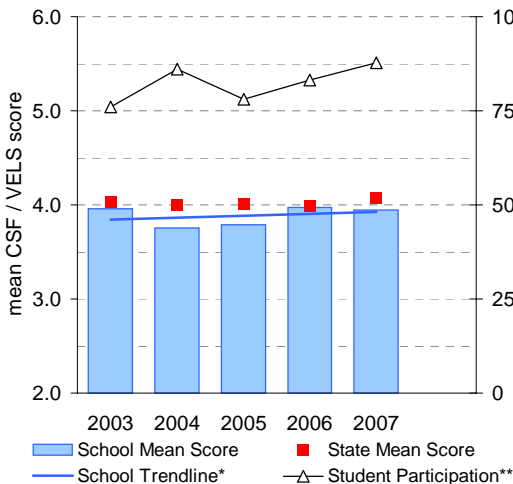
	student participation		Percent of students by VEL5 level							Mean CSF / VEL5 Score	
	(n)	(%)**	Lev1	Lev2	Lev3	Lev4	Lev5	Lev6	Lev6E	School	State
2003											
2004											
2005											
2006											4.8
2007	83	86	0	0	0	33	48	13	6	4.5	4.8

Percent of students by VEL5 level

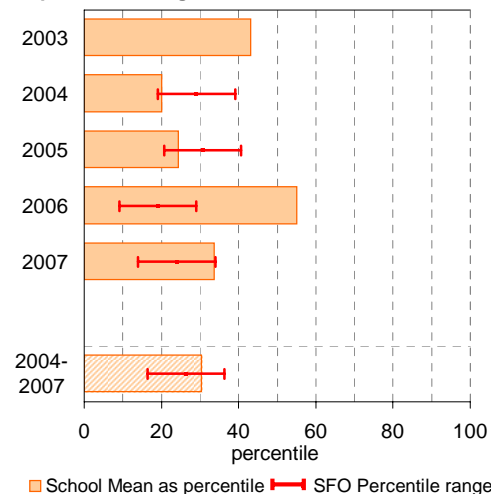


Year 7

School Mean against State Mean, including Participation

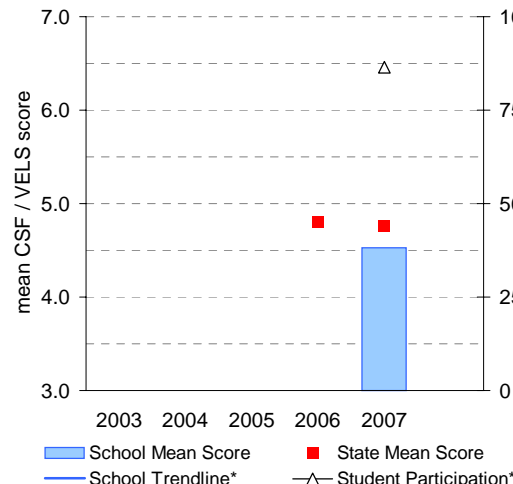


School Mean as percentile against SFO percentile range

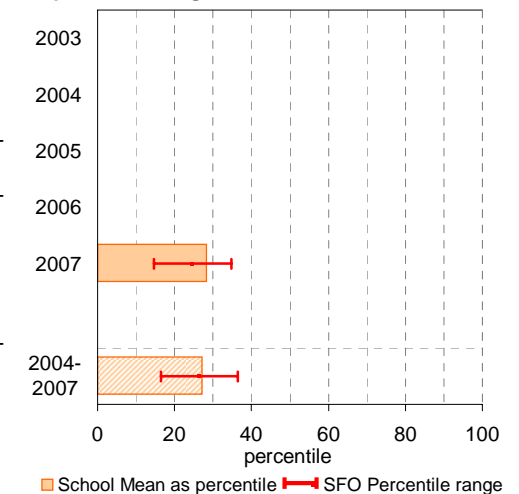


Year 9

School Mean against State Mean, including Participation



School Mean as percentile against SFO percentile range



VCE

School no: 7900

School name: Healesville High School

Explanation: Only 2008 studies, which at least 1 student completed, are included.

Source of data: Victorian Curriculum and Assessment Authority.

Notes:	2004		2005		2006		2007		2008	
	No. of students	school mean	No. of students	school mean	No. of students	school mean	No. of students	school mean	No. of students	school mean
- After allstudy, English, Further Maths and Maths Methods, studies are listed in descending order of the number of students in the latest year.										
- From 2005, VET study scores are included.										
- From 2005, data is based on 'reported' study scores, not 'achieved' study scores.										
allstudy		28.3		28.8		28.5		27.8		26.8
English EN01	52	25.9	46	27.9	47	28.2	49	26.3	45	24.6
Further Mathematics MA07	23	27.7	23	27.4	22	28.2	25	30.7	20	28.9
Mathematical Methods MA08	12	25.6	11	26.3	12	23.6	4	33.0	9	23.3
IT Applications IT02	16	30.8	22	27.2	14	29.1	15	25.8	24	27.7
Health & Human Dev. HH03	14	30.4	13	24.4	17	30.3	11	23.5	20	27.0
Biology BI03	23	28.1	13	28.5	11	30.5	14	27.9	15	26.8
Food & Tech. FY03	14	29.4	20	30.5	6	35.5	14	29.4	13	33.1
Legal Studies LS03	9	32.6	14	28.9	12	27.7	9	27.4	9	26.7
Media ME03	30	28.9	18	30.6	25	27.7	16	26.6	9	26.6
Physical Ed. PE03	9	34.7	6	34.8	5	29.8	5	32.2	9	29.6
Physics PH03	10	26.8	7	26.6	12	24.8	8	28.8	9	25.7
Accounting AC03	11	28.0			6	27.5	14	24.5	8	24.5
Geography GE03	13	25.8			12	26.7	3	32.3	8	22.8
Chemistry CH03	5	27.0	7	27.7	8	24.9	8	28.5	6	27.5
Psychology PY03	10	29.8	11	33.5	7	35.3	8	27.6	5	26.2
Literature LI01	10	27.4					1	40.0	4	24.5
Studio Arts SA03	8	32.4			5	32.6	6	29.0	4	24.0
Design & Tech. DT03	21	28.4	9	31.4	15	31.9	5	27.0	2	34.5
Hospitality (Food & Bev.) (VCE VET) HS06			7	37.0			1	35.0	2	35.0
Visual Communication & Design VC03	8	25.1	10	28.3	8	29.4	8	27.8	2	25.0
Australian History HI08	1	28.0							1	29.0
Community Services Work (VCE VET) CT11							1	25.0	1	25.0
Music Industry (Tech Prod) (VCE VET) MI09					1	29.0			1	29.0

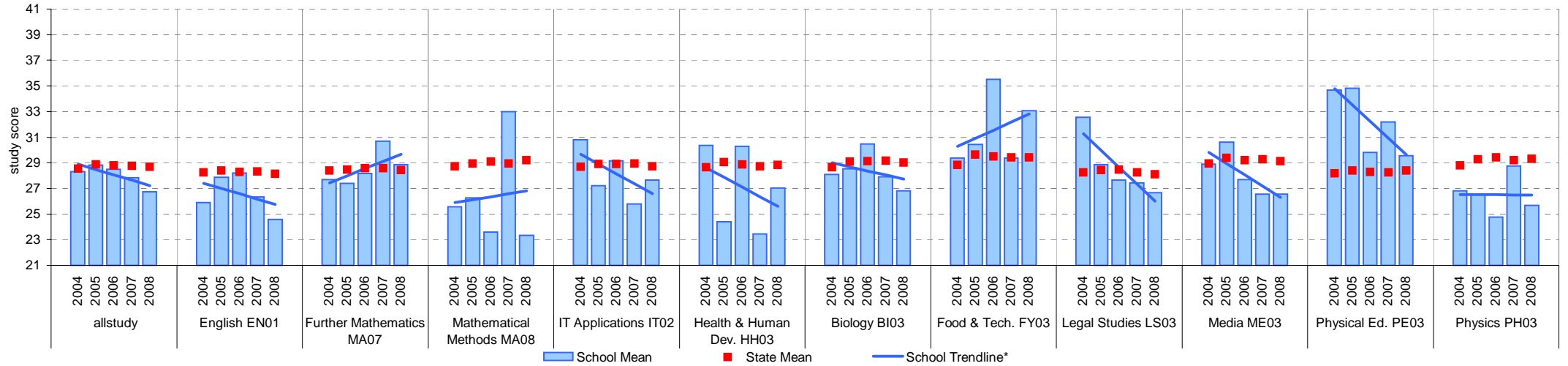
VCE

School no: 7900

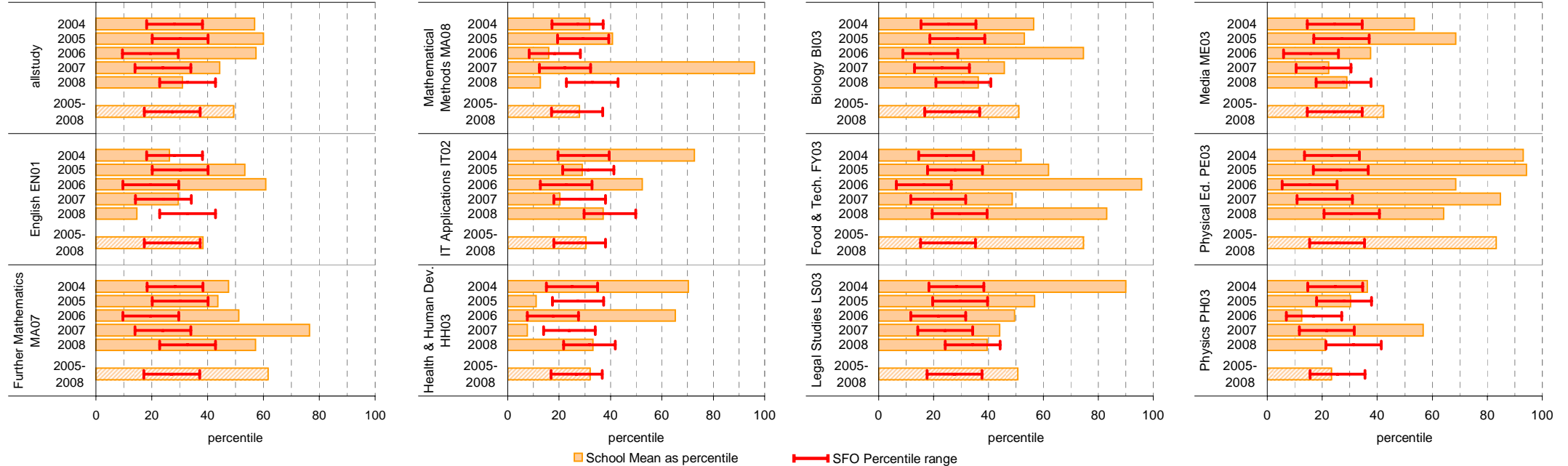
School name: Healesville High School

Source of data: Victorian Curriculum and Assessment Authority.

School Mean against State Mean



School Mean as percentile against SFO percentile range



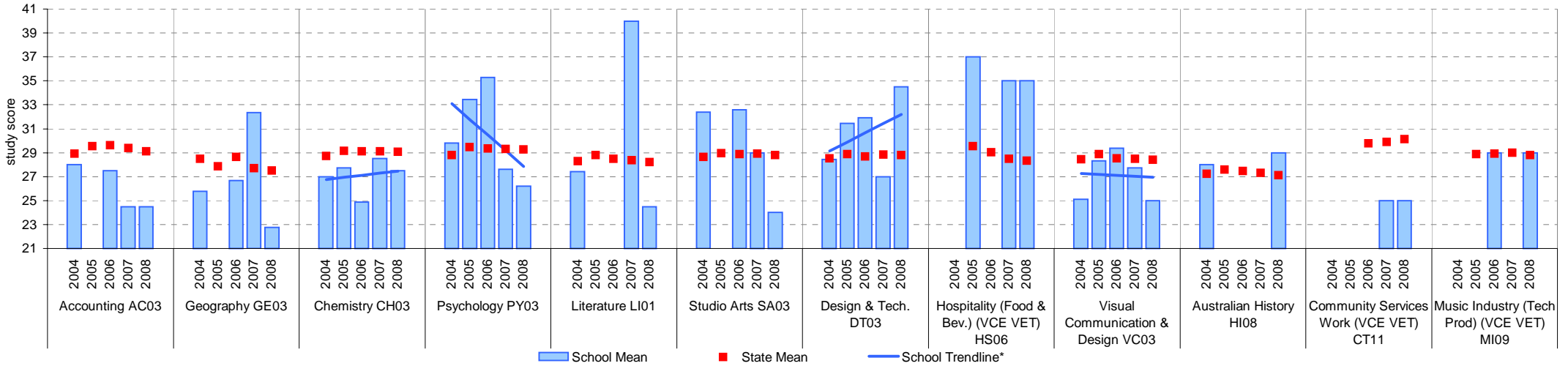
VCE (cont'd)

School no: 7900

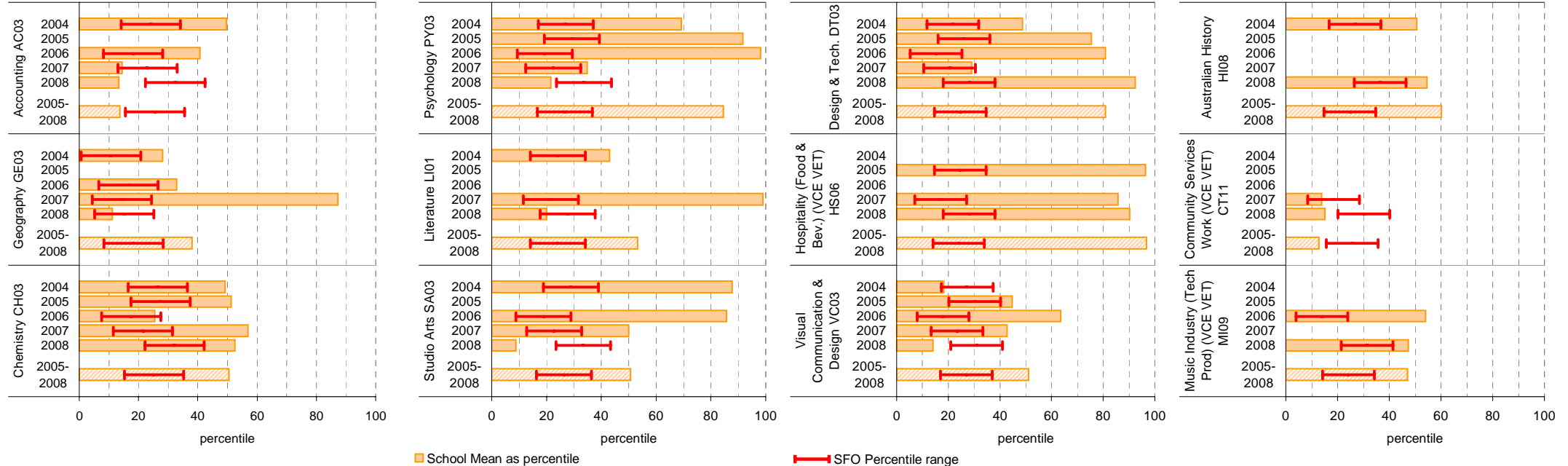
School name: Healesville High School

Source of data: Victorian Curriculum and Assessment Authority.

School Mean against State Mean



School Mean as percentile against SFO percentile range

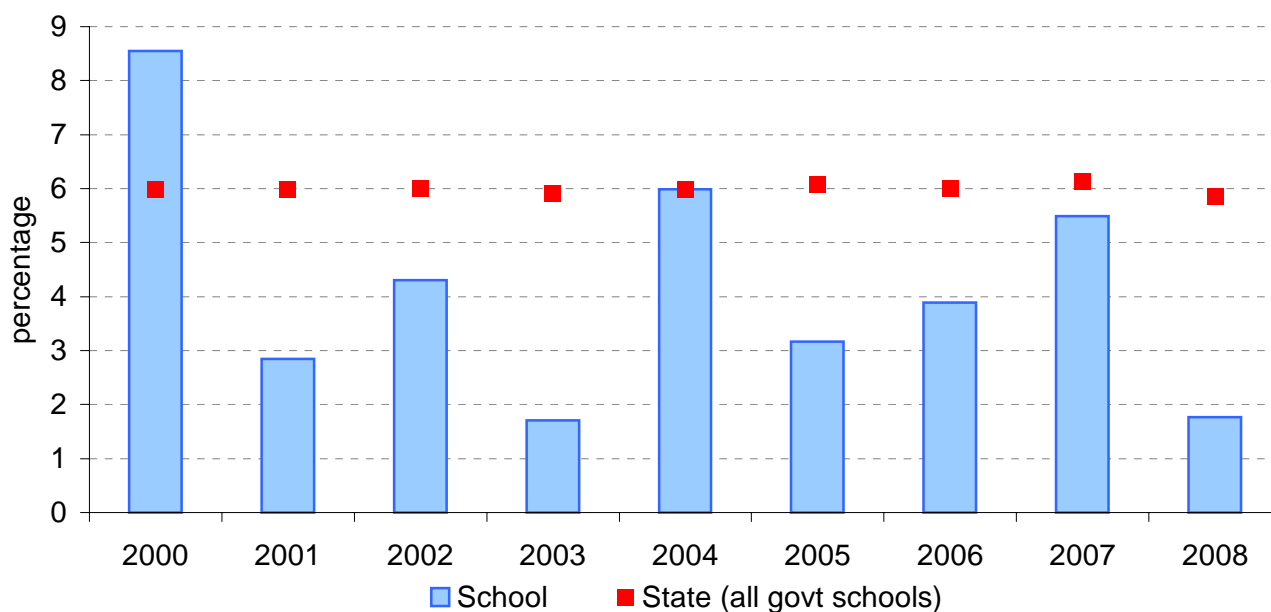


VCE: Study Scores of 40 or more

School no:	7900
School name:	Healesville High School
Explanation:	Of all VCE study scores, the percentage that were 40 or more.
Source of data:	Victorian Curriculum and Assessment Authority.

Year	School		State (all govt schools)
	Total study scores	% 40 or more*	% 40 or more
2000	269	8.6	6.0
2001	386	2.8	6.0
2002	372	4.3	6.0
2003	292	1.7	5.9
2004	317	6.0	6.0
2005	253	3.2	6.1
2006	257	3.9	6.0
2007	255	5.5	6.1
2008	226	1.8	5.9

VCE percentage of study scores of 40 or more*, 2000 to 2008



Note:

- * Prior to 2005, this data may not match the information published in *The Age*. Data presented on this page prior to 2005 does not include study scores from the small number of VET studies that are given study scores.
- From 2005, VET study scores are included.
- From 2005, data is based on 'reported' study scores, not 'achieved' study scores.

VET

School no: 7900
School name: Healesville High School
Source of data: Victorian Curriculum and Assessment Authority.

Notes: * - The school trendline is only plotted when there is data for each calendar year.

1 - UOC = Unit(s) of Competence.

2 - % students based on yr10, 11 & 12 August enrolments.

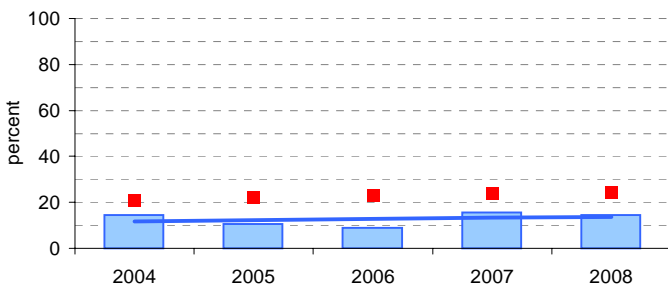
3 - Only includes students undertaking at least 1 UOC.

More detailed information is available on the VASS system provided by VCAA.

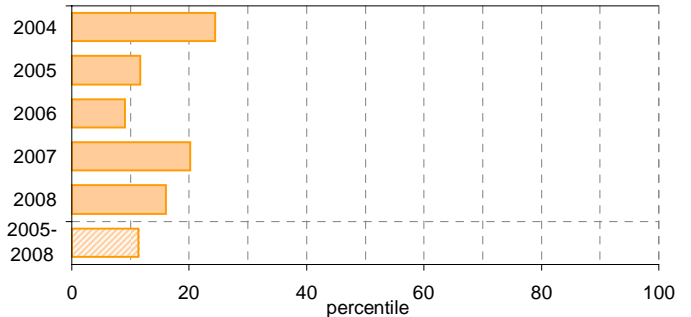
Participation						Completion			
School					State		School		State
Year	Level	No. students undertaking at least 1 UOC ¹	% students ² undertaking at least 1 UOC ¹	Avg no. UOCs ¹ undertaken per student ³	% students ² undertaking at least 1 UOC ¹	Avg no. UOCs ¹ undertaken per student ³	No. UOCs ¹ with satisfactory result	% UOCs ¹ with satisfactory result	% UOCs ¹ with satisfactory result
2004	10	13	15.9	10.1	20.7	11.9	124	94.7	71.3
	11	12	18.2	8.1			85	87.6	
	12	5	8.2	4			20	100	
	10-12	30	14.4	8.3			229	92.3	
2005	10	5	5.5	10.6	22.3	11.9	53	100	72.6
	11	16	23.6	7.6			105	86.8	
	12	1	2	4			4	100	
	10-12	22	10.6	8.1			162	91	
2006	10	11	12.2	10.5	23.0	12.0	86	74.8	75.6
	11	6	7.9	10.2			59	96.7	
	12	2	4.2	10.5			21	100	
	10-12	19	8.9	10.4			166	84.3	
2007	10	13	15.7	10.5	23.8	11.7	124	91.2	76.4
	11	15	20.8	10			129	86	
	12	4	7.7	6.3			23	92	
	10-12	32	15.5	9.7			276	88.8	
2008	10	13	14.4	9.5	24.6	12.0	118	95.2	76.7
	11	14	26	7.6			99	92.5	
	12	1	2	6			6	100	
	10-12	28	14.4	8.5			223	94.1	

Participation - % Yr10-12 students² undertaking at least 1 UOC¹

School against State

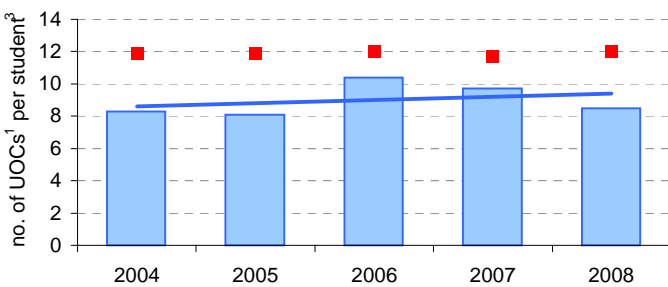


School as percentile

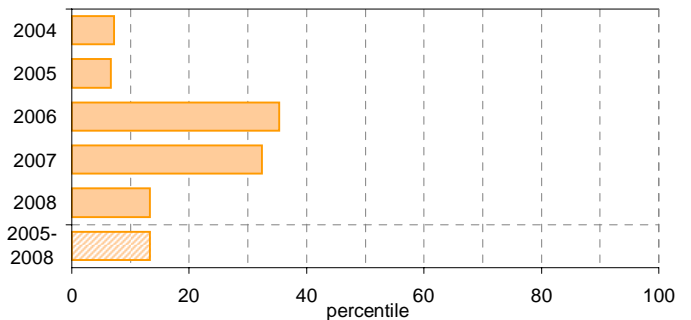


Avg no. UOCs¹ undertaken per student³

School Mean against State Mean

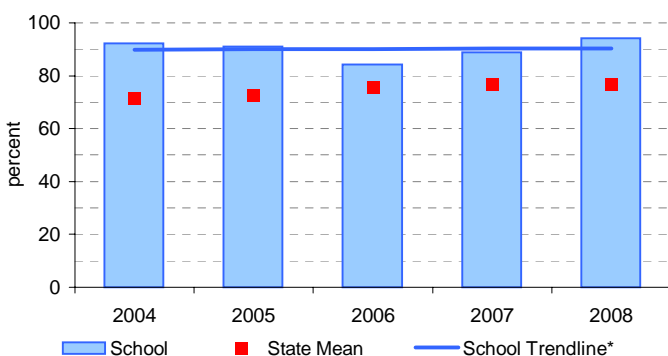


School Mean as percentile

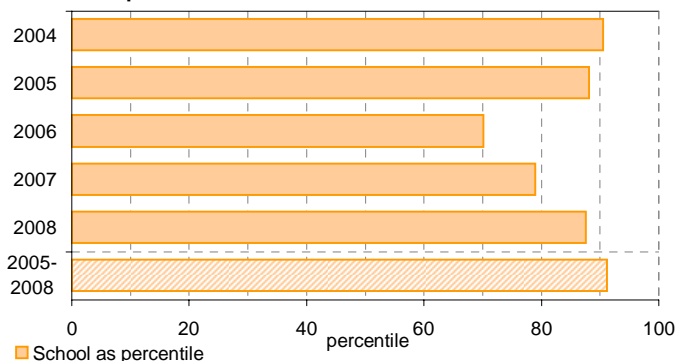


Completion - % UOCs¹ with satisfactory result

School against State



School as percentile



VCAL

School no: 7900
School name: Healesville High School
Explanation: 'No. of VCAL credits undertaken' is calculated by summing the number of credits undertaken by each VCAL student across all VCAL students.

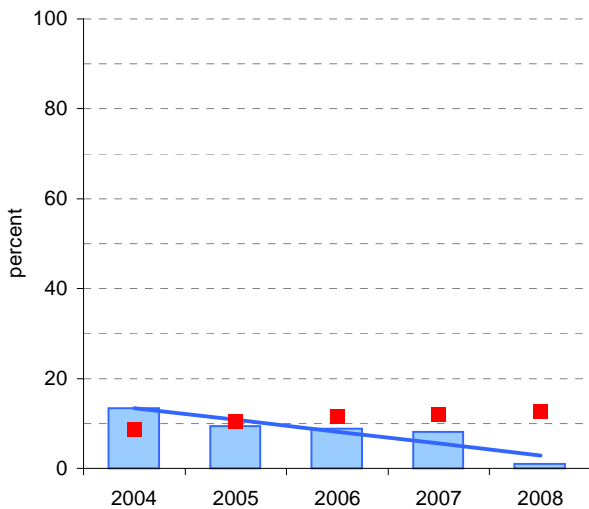
Notes: * - The school trendline is only plotted when there is data for each calendar year.

1 - No. and % students based on yr11 & 12 August enrolments.

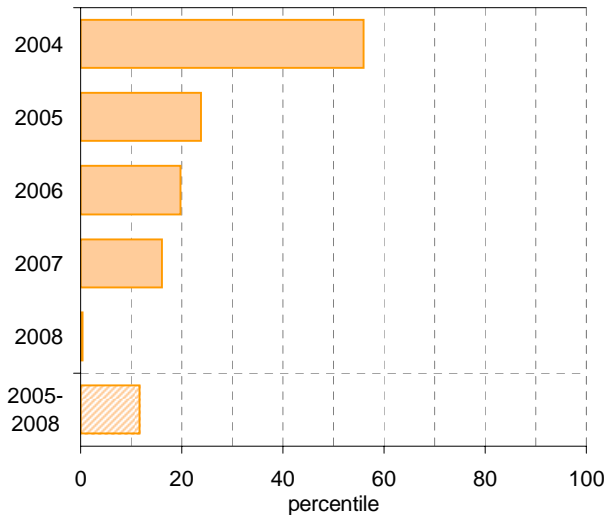
Source of data: Victorian Curriculum and Assessment Authority.
 More detailed information is available on the VASS system provided by VCAA.

Participation						Completion		
School					State	School		State
Year	Year Level	No. students ¹	No. students undertaking VCAL	% students ¹ undertaking VCAL	% students ¹ undertaking VCAL	No. VCAL unit credits undertaken	% satisfactory completion of VCAL credits	% satisfactory completion of VCAL credits
2004	11-12	126.7	17	13.4	8.6	36	77.8	70.4
2005	11-12	116.7	11	9.4	10.4	22	59.1	72.9
2006	11-12	123.7	11	8.9	11.5	22	63.6	77.7
2007	11-12	123.7	10	8.1	12.0	20	90.0	76.5
2008	11-12	104.7	1	1.0	12.7	2	100.0	75.8

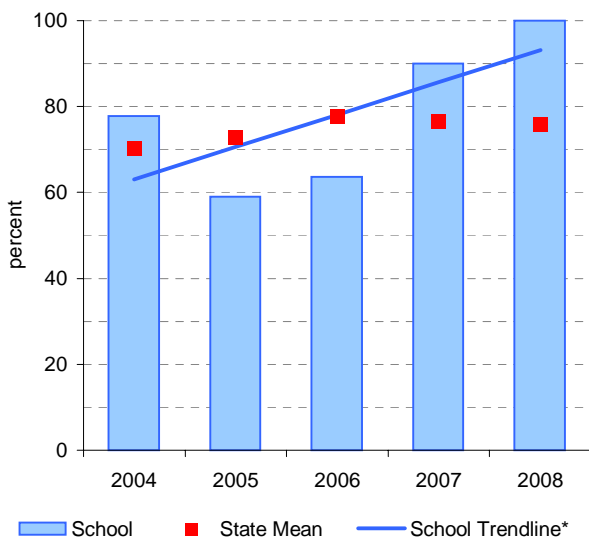
Participation - % Yr11-12 students¹ undertaking VCAL School against State



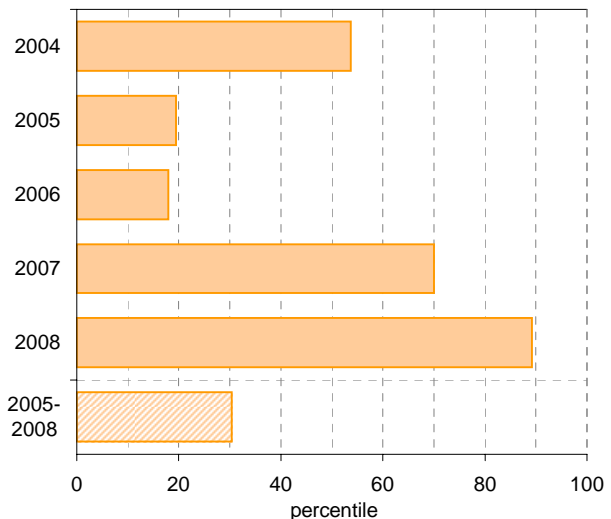
School as percentile



Completion - % satisfactory completion of VCAL credits School against State



School as percentile



■ School
 ■ State Mean
 — School Trendline*
 ■ School as percentile

Teacher Assessment of Student Progress (PSD students)

School no: 7900

School name: Healesville High School

Explanation: Teachers assess their students' progress against the 8 VELS Domains / CSF KLAs using a 6-point scale (students in special schools and those who cannot be assessed against the VELS / CSF).

Source of data: Data transmitted from school to DEECD via an online web-form.

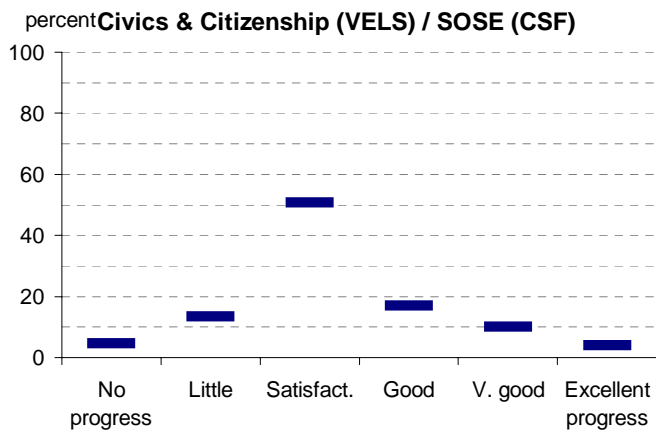
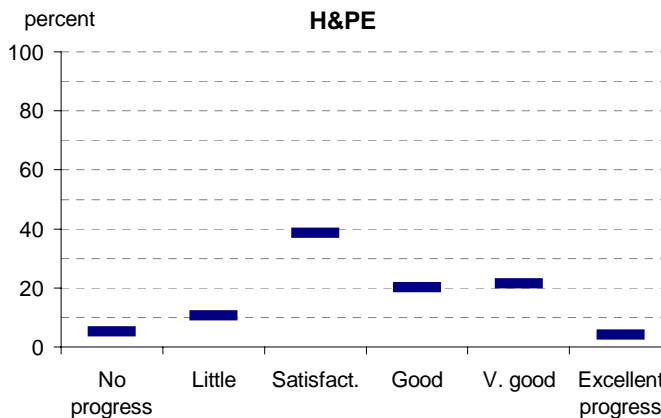
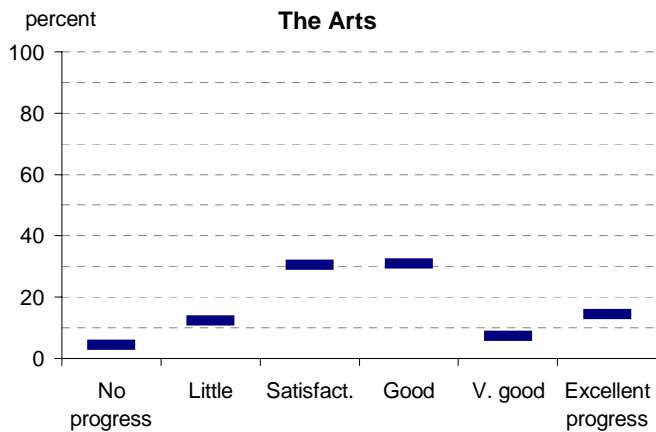
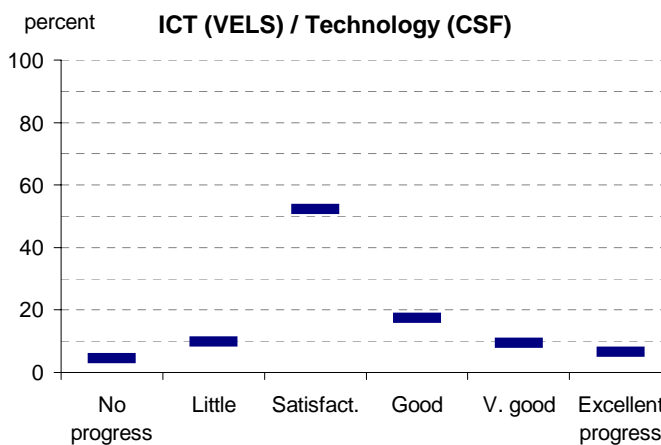
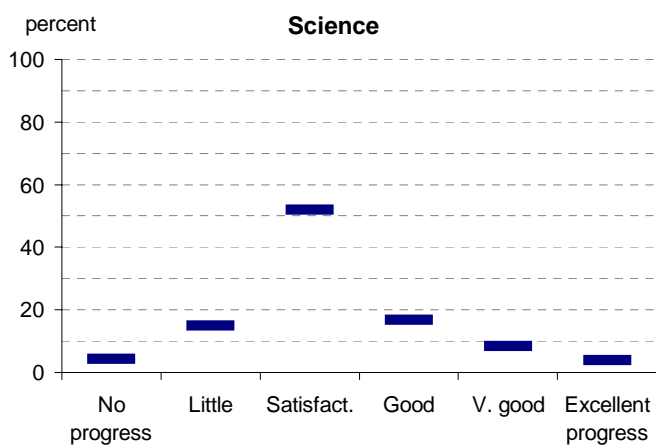
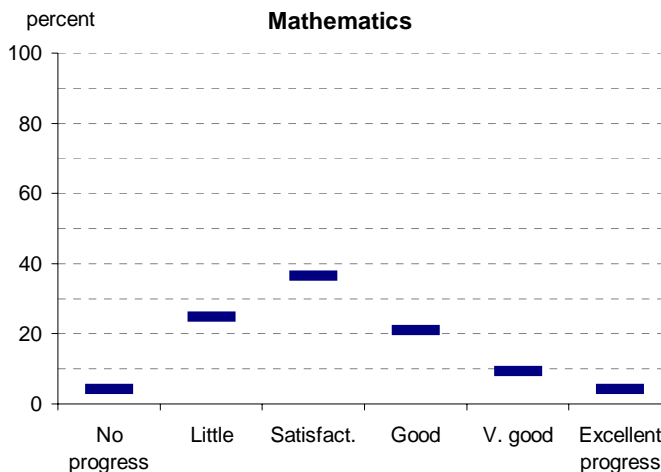
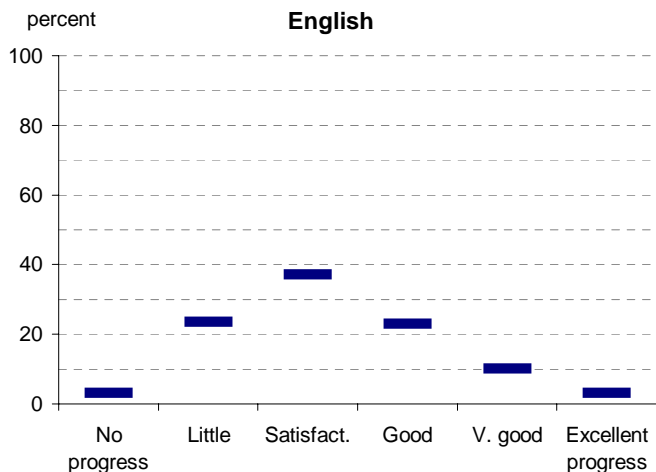
	No progress progress (%)	Little progress (%)	Satisfactory progress (%)	Good progress (%)	Very good progress (%)	Excellent progress (%)	Total students assessed ¹ (no.)
2004 (by CSF KLA)							
English							
Mathematics							
Science							
Technology							
The Arts							
H&PE							
SOSE							
2005 (by CSF KLA)							
English							
Mathematics							
Science							
Technology							
The Arts							
H&PE							
SOSE							
2006 (by VELS Domain)							
English							
Mathematics							
Science							
ICT							
The Arts							
H&PE							
Civics & Citizenship							
2007 (by VELS Domain)							
English							
Mathematics							
Science							
ICT							
The Arts							
H&PE							
Civics & Citizenship							
2008 (by VELS Domain)							
English							
Mathematics							
Science							
ICT							
The Arts							
H&PE							
Civics & Citizenship							
2007 Secondary state benchmarks (by VELS Domain)*							
English	3	24	37	23	10	3	
Mathematics	4	25	36	21	9	4	
Science	4	15	52	17	8	4	
ICT	5	10	52	17	9	7	
The Arts	4	12	31	31	7	14	
H&PE	5	11	39	20	21	4	
Civics & Citizenship	5	13	51	17	10	4	

Notes: ¹ If schools provided percentages only, it is not possible to report the number of students assessed. In these cases, the total percentage (100) will be shown.

* 2008 benchmarks will be calculated in August, when data from all schools has been submitted.

Teacher Assessment of Student Progress (PSD students)

School no: 7900
 School name: Healesville High School



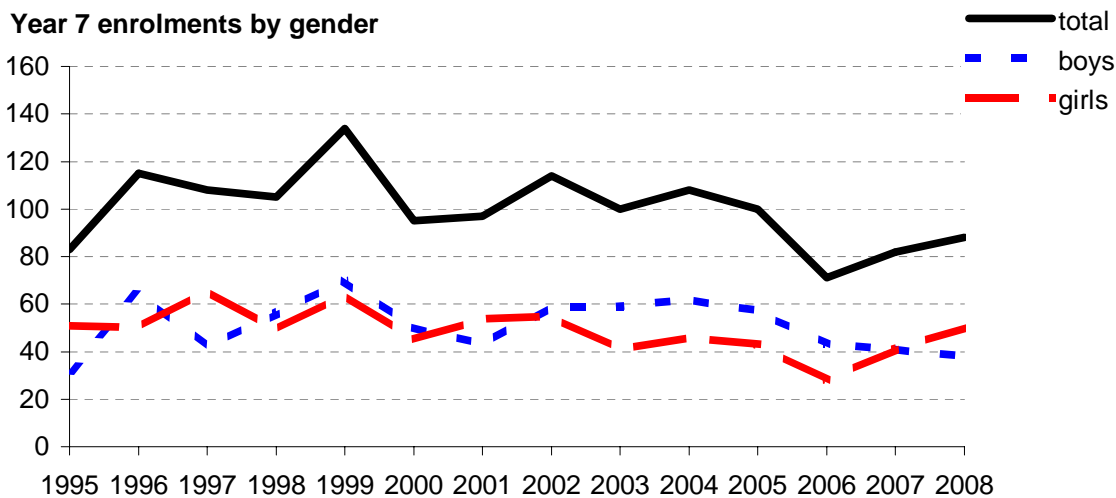
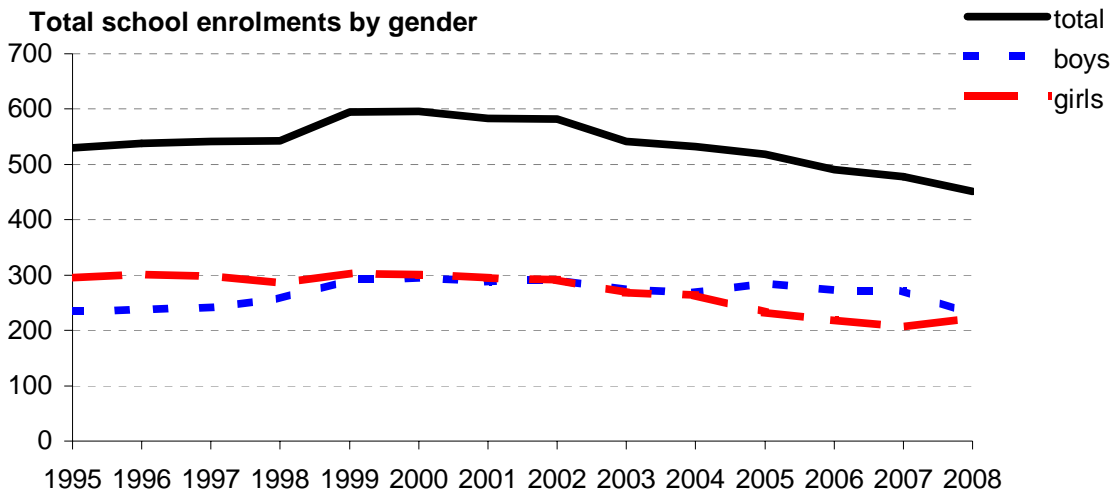
- 2004 (by CSF KLA)
- 2005 (by CSF KLA)
- 2006 (by VELS Domain)
- 2007 (by VELS Domain)
- 2008 (by VELS Domain)
- 2007 Secondary state benchmarks (by VELS Domain)*

Notes: * 2008 benchmarks will be calculated in August, when data from all schools has been submitted.

Enrolments

School no: 7900
School name: Healesville High School
Explanation: Enrolments at February census.
Source of data: February census.

Year	Total school enrolment			Prep enrolment			Year 7 enrolments		
	boys	girls	total	boys	girls	total	boys	girls	total
1995	235	295	530				32	51	83
1996	237	301	538				65	50	115
1997	242	299	541				42	66	108
1998	257	286	543				56	49	105
1999	292	303	595				70	64	134
2000	295	301	596				50	45	95
2001	288	295	583				43	54	97
2002	291	292	583				59	55	114
2003	273	268	541				59	41	100
2004	269	263	532				62	46	108
2005	286	233	518				57	43	100
2006	272	219	491				43	28	71
2007	272	206	478				41	41	82
2008	229	222	451				38	50	88



Apparent Student Retention

Note: * The school trendline is only plotted when there is data for each calendar year.

School no: 7900

School name: Healesville High School

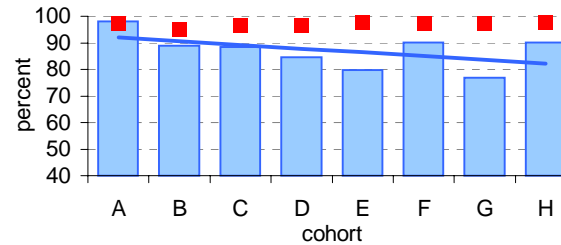
Explanation: Apparent retention rates are based on enrolments. For example, Year 7Feb-12Aug apparent retention refers to year 12 enrolment of students in full-time school education in August expressed as a percentage of year 7 enrolments in February five years earlier.

Source of data: February and August census.

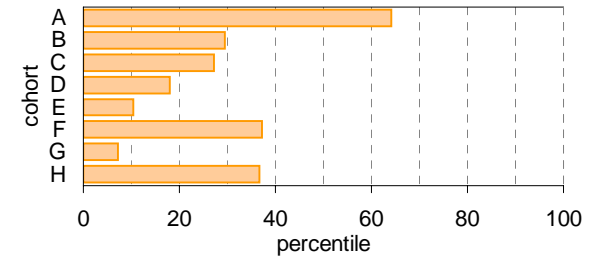
Year 7 (Feb) - 10 (Aug)

	Cohorts:	A	B	C	D	E	F	G	H
Year 7		1998	1999	2000	2001	2002	2003	2004	2005
Year 10		2001	2002	2003	2004	2005	2006	2007	2008
Year 7 (Feb)	no.	105	134	95	97	114	100	108	100
Year 10 (Aug)	no.	103	119.2	84	82	91	90	83	90
Year 7 (Feb) - 10 (Aug)	%	98.1	89.0	88.4	84.5	79.8	90.0	76.9	90.0
State mean	%	97.3	95.0	96.6	96.3	97.6	97.3	97.4	97.6

School against State

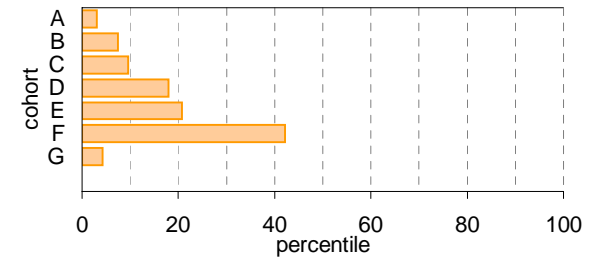
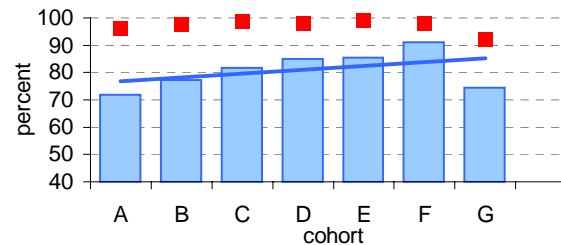


School as percentile



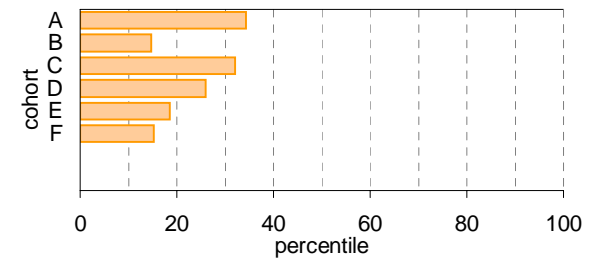
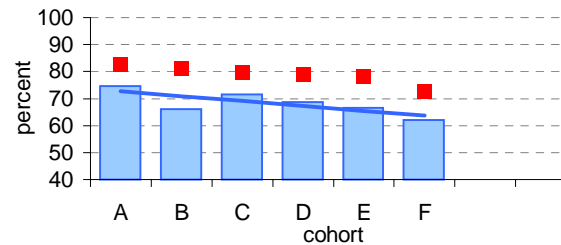
Year 10 (Aug) - 11 (Feb)

	Cohorts:	A	B	C	D	E	F	G
Year 10		2001	2002	2003	2004	2005	2006	2007
Year 11		2002	2003	2004	2005	2006	2007	2008
Year 10 (Aug)	no.	103	119.2	84	82	91	90	83
Year 11 (Feb)	no.	74	92	68.6	69.7	77.8	82	61.8
Year 10 (Aug) - 11 (Feb)	%	71.8	77.2	81.7	85.0	85.5	91.1	74.5
State mean	%	96.2	97.7	98.7	98.2	99.0	98.2	92.0



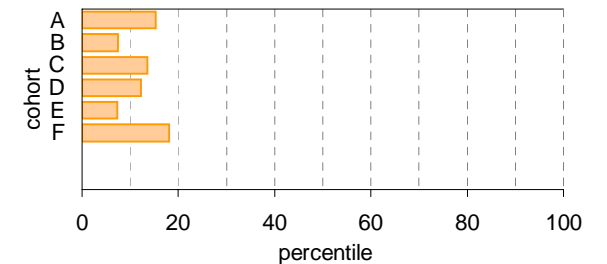
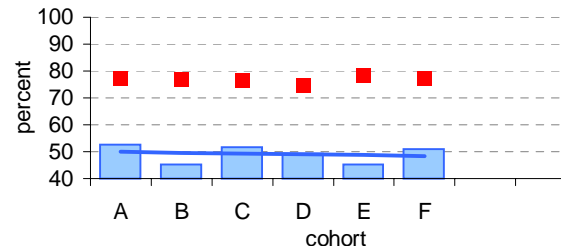
Year 11 (Feb) - 12 (Aug)

	Cohorts:	A	B	C	D	E	F
Year 11		2002	2003	2004	2005	2006	2007
Year 12		2003	2004	2005	2006	2007	2008
Year 11 (Feb)	no.	74	92	68.6	69.7	77.8	82
Year 12 (Aug)	no.	55.2	60.7	49	47.8	51.7	50.9
Year 11 (Feb) - 12 (Aug)	%	74.6	66.0	71.4	68.6	66.5	62.1
State mean	%	82.5	81.0	79.8	78.8	78.1	72.7



Year 7 (Feb) - 12 (Aug)

	Cohorts:	A	B	C	D	E	F
Year 7		1998	1999	2000	2001	2002	2003
Year 12		2003	2004	2005	2006	2007	2008
Year 7 (Feb)	no.	105	134	95	97	114	100
Year 12 (Aug)	no.	55.2	60.7	49	47.8	51.7	50.9
Year 7 (Feb) - 12 (Aug)	%	52.6	45.3	51.6	49.3	45.4	50.9
State mean	%	77.2	76.9	76.8	74.6	78.2	77.5



Legend: School (blue bar), State Mean (red square), School Trendline* (blue line)

Legend: School as percentile (orange bar)

Real Student Retention

Notes: * The school trendline is only plotted when there is data for each calendar year.
 ^ 2008 benchmarks will be calculated in August, when data from all schools has been submitted.

School no: 7900

School name: Healesville High School

Explanation: Real retention rates show the percentage of students who have been enrolled at the same school over a period of time.

For example, the formula for the real retention rate for Year 7Feb to 10Aug for school X in 2008 is as follows:

$$\frac{\text{(no. of students enrolled in Yr10 in school X as at August 2008 census and who enrolled prior to 1/3/2005, ie, enrolled in school X at beginning of Yr7)}}{\text{(enrolments in Yr7 Feb in 2005 according to census)}}$$

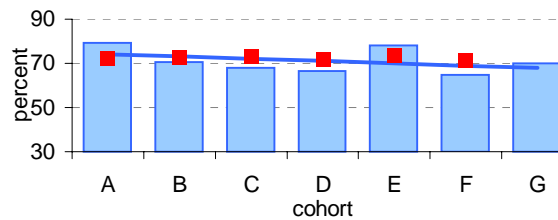
By definition, real school retention will be less than or equal to 100% (assuming there are no students repeating the year, or accelerating through years). Generally, real school retention rates are affected by students transferring to another school & students exiting the school system. They are a measure of the 'holding power' of the school.

Source of data: Data retrieved electronically from CASES21 at time of rollover.

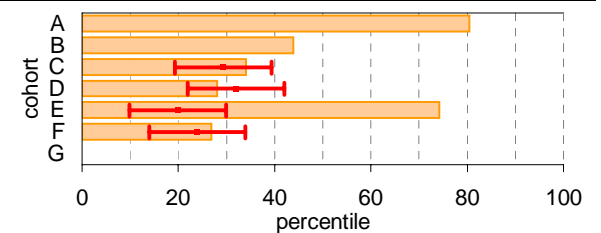
Year 7 (Feb) - 10 (Aug)

	Cohorts:	A	B	C	D	E	F	G
Year 7		1999	2000	2001	2002	2003	2004	2005
Year 10		2002	2003	2004	2005	2006	2007	2008
Year 7 (Feb)	no.	134	95	97	114	100	108	100
Year 10 (Aug)	no.	106.2	67	66	76	78	70	70
Year 7 (Feb) - 10 (Aug)	%	79.3	70.5	68.0	66.7	78.0	64.8	70.0
State mean^	%	72.5	72.7	72.8	71.7	73.5	71.5	

School against State^

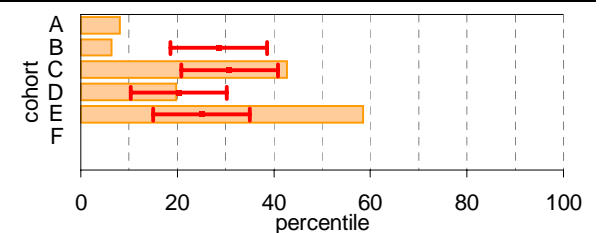
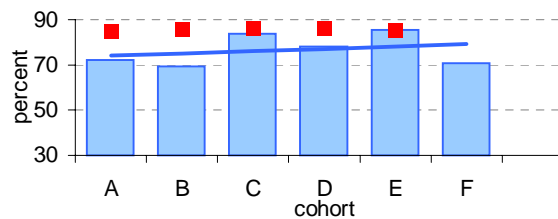


School as percentile against SFO percentile range^



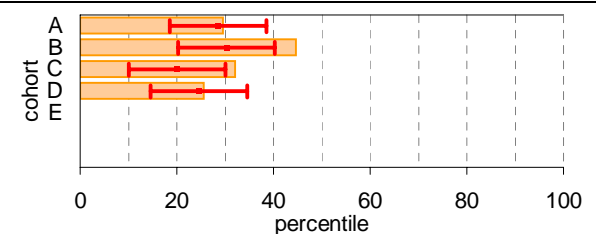
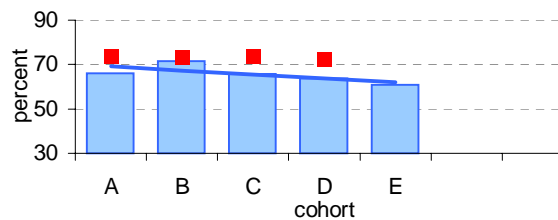
Year 10 (Aug) - 11 (Feb)

	Cohorts:	A	B	C	D	E	F
Year 10		2002	2003	2004	2005	2006	2007
Year 11		2003	2004	2005	2006	2007	2008
Year 10 (Aug)	no.	119.2	84	82	91	90	83
Year 11 (Feb)	no.	86	58.3	68.7	71	77	58.7
Year 10 (Aug) - 11 (Feb)	%	72.1	69.4	83.8	78.0	85.6	70.7
State mean^	%	84.9	85.9	85.9	86.1	85.1	



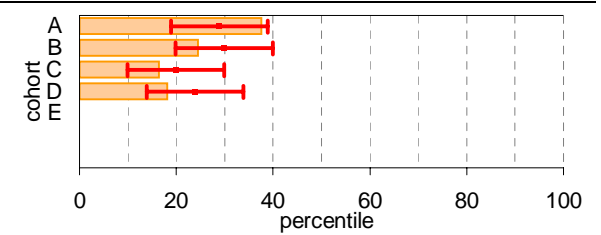
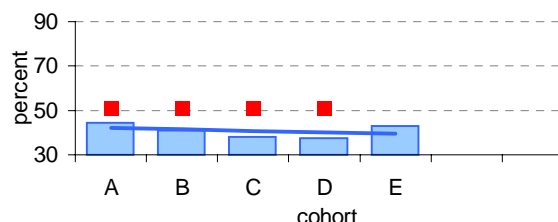
Year 11 (Feb) - 12 (Aug)

	Cohorts:	A	B	C	D	E
Year 11		2003	2004	2005	2006	2007
Year 12		2004	2005	2006	2007	2008
Year 11 (Feb)	no.	92	68.6	69.7	77.8	82
Year 12 (Aug)	no.	60.7	49	45.8	49.7	49.9
Year 11 (Feb) - 12 (Aug)	%	66.0	71.4	65.7	63.9	60.9
State mean^	%	73.9	73.0	73.5	72.5	



Year 7 (Feb) - 12 (Aug)

	Cohorts:	A	B	C	D	E
Year 7		1999	2000	2001	2002	2003
Year 12		2004	2005	2006	2007	2008
Year 7 (Feb)	no.	134	95	97	114	100
Year 12 (Aug)	no.	59.7	39	36.8	42.7	42.9
Year 7 (Feb) - 12 (Aug)	%	44.6	41.1	37.9	37.5	42.9
State mean^	%	50.6	51.0	51.1	50.8	



Legend: School (blue bar), State Mean (red square), School Trendline* (blue line), School as percentile (orange bar), SFO Percentile range (red arrow)

Exit Destination: Year 10

School no: 7900

School name: Healesville High School

Explanation: The destination of students who left during or at the end of Year 10.

Source of data: Data retrieved electronically from CASES21 following February census.

Exit Destination	2004		2005		2006		2007		2008		2007 state^
	n	%	n	%	n	%	n	%	n	%	%
Continuing education and training											
Government School	2	10.5	5	19.2	1	4.8	3	10.7	3	13.0	42.5
Non-Government School	3	15.8									6.0
University											0.1
Other Training Provider			3	11.5	1	4.8			1	4.3	3.3
TAFE / RTO / ACE							1	3.6	2	8.7	11.7
Apprenticeship / Traineeship							7	25.0	1	4.3	6.4
Home Schooling											0.4
Deferred											0.0
(ceased in 2007)											
School (non Victorian)					2	9.5					
TAFE					2	9.5					
Private Registered Training Organisation					1	4.8					
Adult and Community Education Organisation					1	4.8					
SUBTOTAL	5	26.3	8	30.8	8	38.1	11	39.3	7	30.4	70.5
Not continuing education and training											
Employed (part time)			1	3.8					1	4.3	1.7
Employed (full time)	1	5.3	5	19.2	5	23.8	1	3.6	3	13.0	6.5
Unemployed (seeking work)					2	9.5					4.8
Unemployed (not seeking work)†									1	4.3	1.3
SUBTOTAL	1	5.3	6	23.1	7	33.3	1	3.6	5	21.7	14.3
Unknown	13	68.4	12	46.2	6	28.6	16	57.1	11	47.8	15.2
TOTAL	19	100.0	26	100.0	21	100.0	28	100.0	23	100.0	100.0

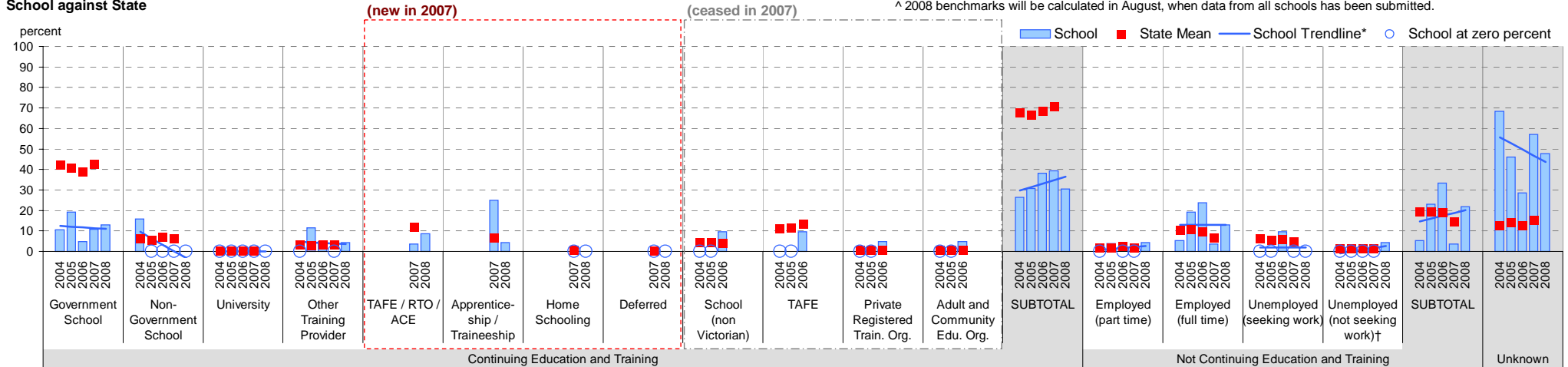
Total Yr 10 February enrolment

Notes: * The school trendline is being trialled. It is only plotted when there is data for each calendar year.

† Includes deceased students.

^ 2008 benchmarks will be calculated in August, when data from all schools has been submitted.

School against State



Exit Destination: Year 11

School no: 7900

School name: Healesville High School

Explanation: The destination of students who left during or at the end of Year 11.

Source of data: Data retrieved electronically from CASES21 following February census.

Exit Destination	2004		2005		2006		2007		2008		2007 state [^]
	n	%	n	%	n	%	n	%	n	%	%
Continuing education and training											
Government School	2	11.8	3	11.5	6	26.1	4	13.8	1	7.1	18.6
Non-Government School	4	23.5	1	3.8							4.4
University											0.3
Other Training Provider			2	7.7							4.3
(new in 2007)											
TAFE / RTO / ACE							1	3.4			15.0
Apprenticeship / Traineeship							5	17.2	2	14.3	10.7
Home Schooling											0.4
Deferred											0.0
(ceased in 2007)											
School (non Victorian)					1	4.3					
TAFE					1	4.3					
Private Registered Training Organisation											
Adult and Community Education Organisation			1	3.8							
SUBTOTAL	6	35.3	7	26.9	8	34.8	10	34.5	3	21.4	53.9
Not continuing education and training											
Employed (part time)			1	3.8			3	10.3	2	14.3	4.1
Employed (full time)	1	5.9	1	3.8	6	26.1	1	3.4	1	7.1	13.7
Unemployed (seeking work)			2	7.7	3	13.0	1	3.4			9.1
Unemployed (not seeking work)†							1	3.4			1.8
SUBTOTAL	1	5.9	4	15.4	9	39.1	5	17.2	3	21.4	28.7
Unknown	10	58.8	15	57.7	6	26.1	14	48.3	8	57.1	17.4
TOTAL	17	100.0	26	100.0	23	100.0	29	100.0	14	100.0	100.0

Total Yr 11 February enrolment

69

70

78

82

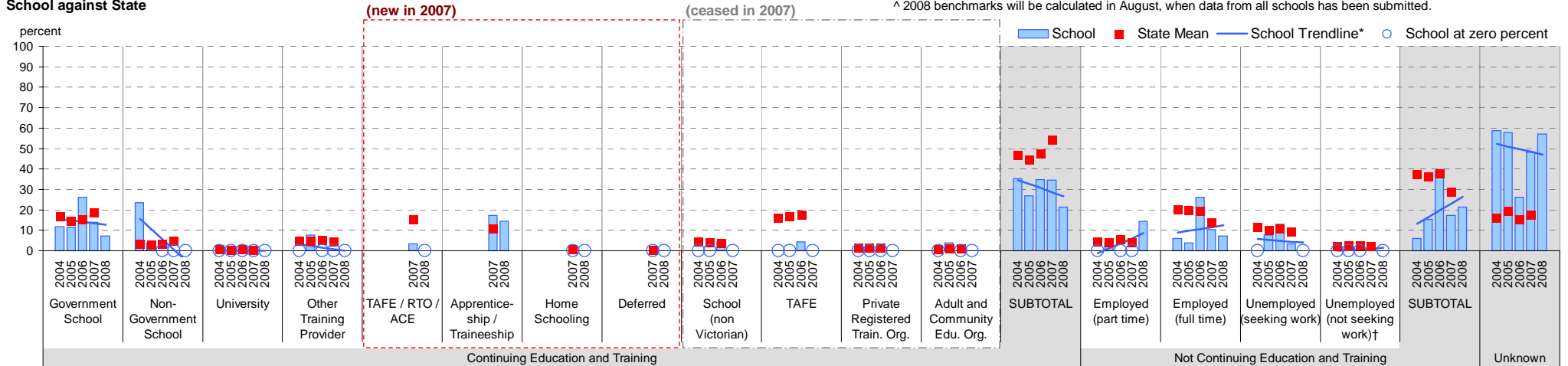
62

Notes: * The school trendline is being trialled. It is only plotted when there is data for each calendar year.

† Includes deceased students.

^ 2008 benchmarks will be calculated in August, when data from all schools has been submitted.

School against State



Exit Destination: Students who left Year 12 before completing the year

School no: 7900

School name: Healesville High School

Explanation: The destination of students who left prior to completing Year 12.

Source of data: Data retrieved electronically from CASES21 following February census.

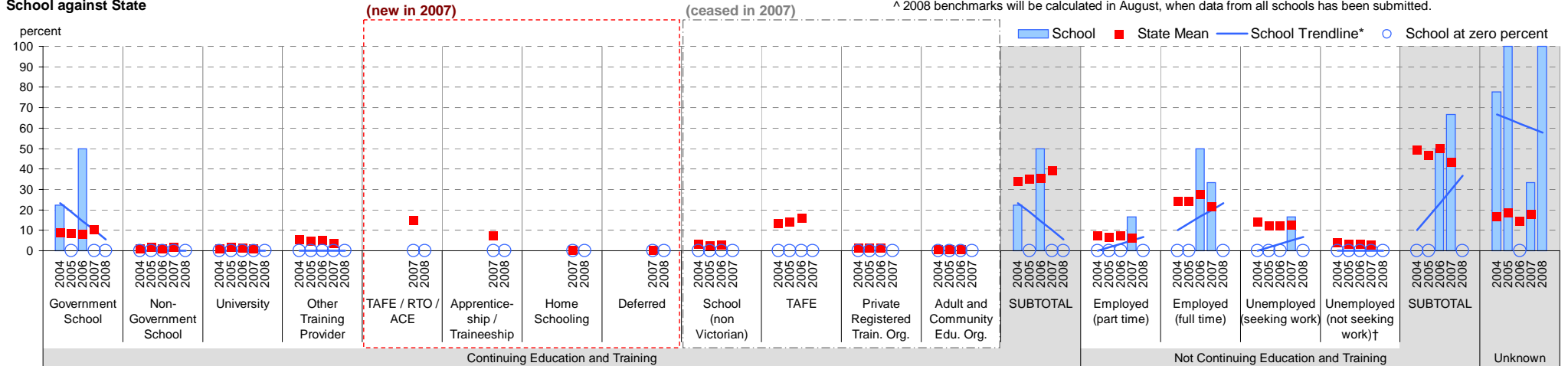
Exit Destination	2004		2005		2006		2007		2008		2007 state [^]
	n	%	n	%	n	%	n	%	n	%	%
Continuing education and training											
Government School	2	22.2			3	50.0					10.2
Non-Government School											1.8
University											1.1
Other Training Provider											3.5
(new in 2007)											
TAFE / RTO / ACE											14.7
Apprenticeship / Traineeship											7.5
Home Schooling											
Deferred											0.1
(ceased in 2007)											
School (non Victorian)											
TAFE											
Private Registered Training Organisation											
Adult and Community Education Organisation											
SUBTOTAL	2	22.2			3	50.0					39.0
Not continuing education and training											
Employed (part time)							1	16.7			6.0
Employed (full time)					3	50.0	2	33.3			21.6
Unemployed (seeking work)							1	16.7			12.8
Unemployed (not seeking work)†											2.9
SUBTOTAL					3	50.0	4	66.7			43.2
Unknown	7	77.8	4	100.0			2	33.3	2	100.0	17.8
TOTAL	9	100.0	4	100.0	6	100.0	6	100.0	2	100.0	100.0
Total Yr 11 February enrolment	64		49		54		58		53		

Notes: * The school trendline is being trialled. It is only plotted when there is data for each calendar year.

† Includes deceased students.

^ 2008 benchmarks will be calculated in August, when data from all schools has been submitted.

School against State



Exit Destination: Students who left at the end of Year 12

School no: 7900

School name: Healesville High School

Explanation: The destination of students who left at the end of Year 12.

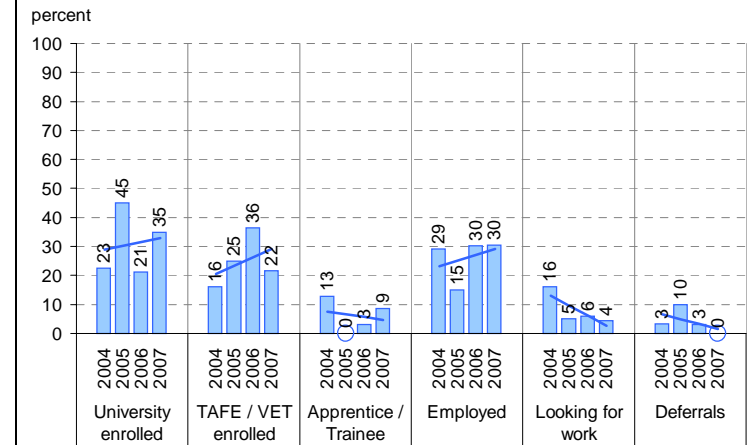
Source of data: Data retrieved electronically from CASES21 following February census.

Exit Destination	2004		2005		2006		2007		2008		2007 state^
	n	%	n	%	n	%	n	%	n	%	
Continuing education and training											
Government School					1	2.1					1.2
Non-Government School	2	3.2	2	3.6	1	2.1					0.3
University	5	7.9	14	25.5	19	39.6	13	25.5	9	17.6	36.6
Other Training Provider			2	3.6	1	2.1	1	2.0			2.7
(new in 2007) TAFE / RTO / ACE							13	25.5	16	31.4	22.7
Apprenticeship / Traineeship							3	5.9	2	3.9	5.6
Home Schooling											0.0
Deferred							1	2.0			4.1
(ceased in 2007) School (non Victorian)					1	2.1					
TAFE	4	6.3	11	20.0	15	31.3					
Private Registered Training Organisation	1	1.6	1	1.8							
Adult and Community Education Organisation											
SUBTOTAL	12	19.0	30	54.5	38	79.2	31	60.8	27	52.9	73.2
Not continuing education and training											
Employed (part time)	1	1.6	2	3.6	1	2.1	7	13.7	2	3.9	5.5
Employed (full time)	1	1.6	4	7.3	6	12.5	3	5.9	2	3.9	10.5
Unemployed (seeking work)			1	1.8	2	4.2	4	7.8	5	9.8	4.4
Unemployed (not seeking work)†											0.7
SUBTOTAL	2	3.2	7	12.7	9	18.8	14	27.5	9	17.6	21.1
Unknown	49	77.8	18	32.7	1	2.1	6	11.8	15	29.4	5.7
TOTAL	63	100.0	55	100.0	48	100.0	51	100.0	51	100.0	100.0
Total Yr 12 February enrolment	64		49		54		58		53		

On Track

Source of data: Data received from a telephone survey of Year 12 completers, conducted in April / May of the subsequent year.

School only



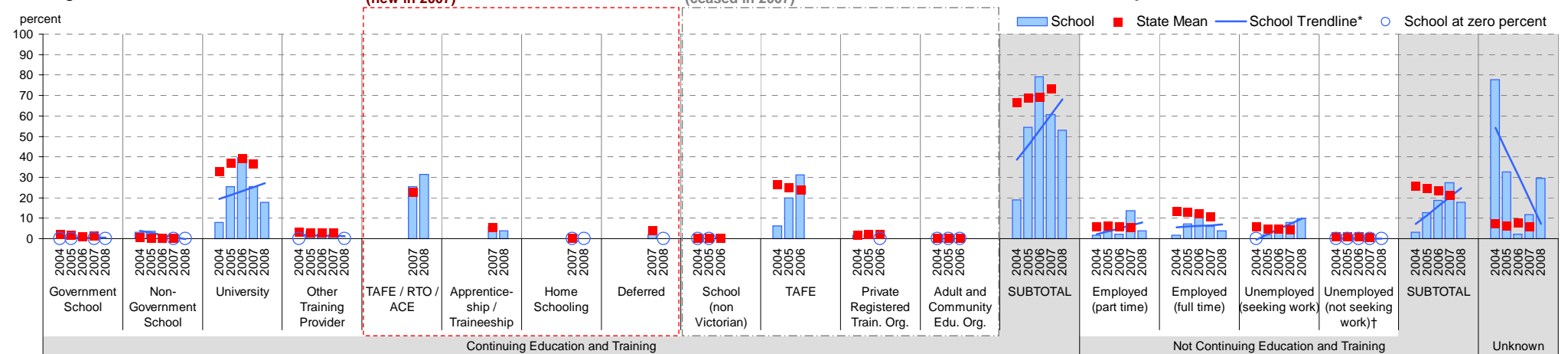
Note: The exit destination data from On Track and CASES21 is not directly comparable for several reasons, one of which is the different bases. CASES21 data is based on all Year 12 completers, whereas On Track is based on Year 12 completers who responded to the survey. Hence the CASES21 data has an "unknown" category and the On Track data does not. Another reason is the slightly different categories for example, CASES21 includes a "home schooling" category.

Notes: * The school trendline is being trialled. It is only plotted when there is data for each calendar year.

† Includes deceased students.

^ 2008 benchmarks will be calculated in August, when data from all schools has been submitted.

School against State



Student Absence

School no: 7900

School name: Healesville High School

Source of data: Data retrieved electronically from CASES21.

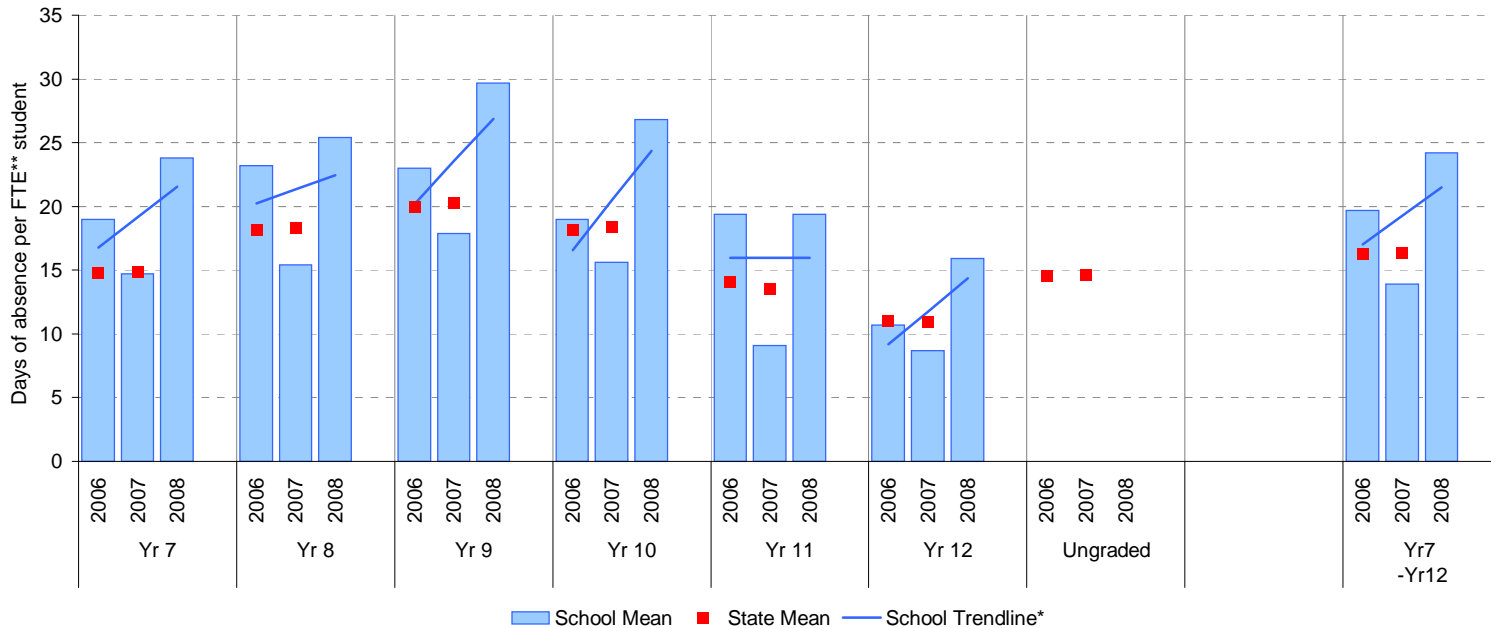
Explanation: The average (mean) number of absent days† per FTE** student.

Note that 20 absent days equates to 1 absent day per fortnight, and 10 absent days to 1 absent day per month.

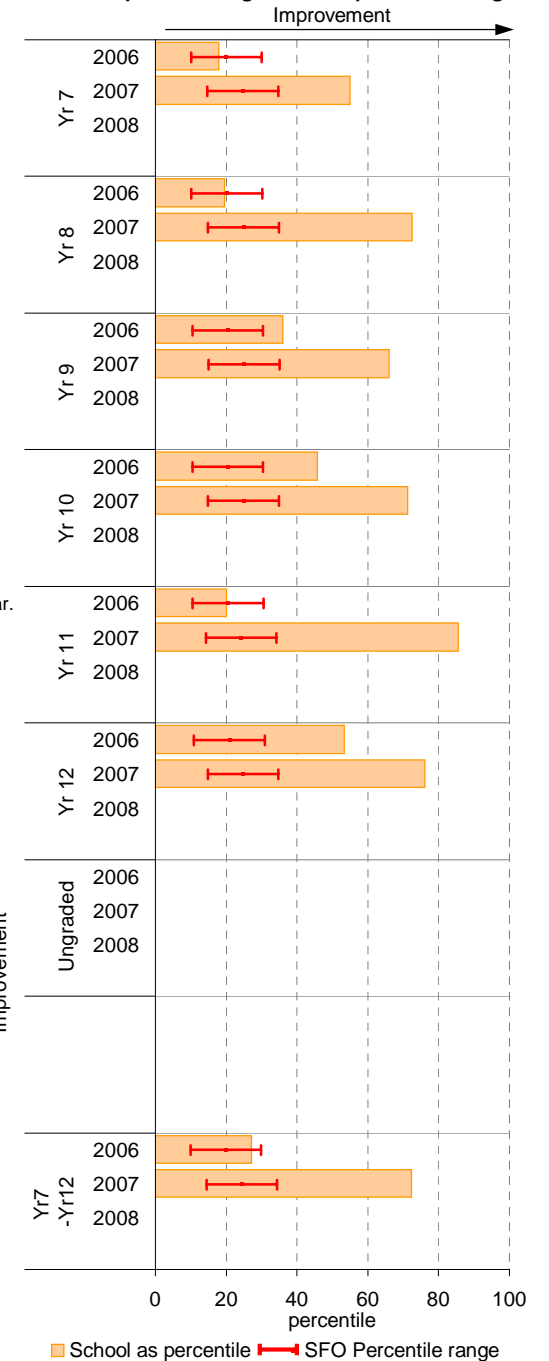
	School						2007 state benchmark^		
	2006		2007		2008		25th ptile	Mean	75th ptile
	Enrolments	Avg absent days / FTE** student	Enrolments	Avg absent days / FTE** student	Enrolments	Avg absent days / FTE** student			
Yr 7	71.0	19	82.0	14.7	88.0	23.8	12.6	14.9	18.6
Yr 8	97.0	23.2	72.0	15.4	80.0	25.4	15.1	18.3	22.2
Yr 9	93.2	23	96.0	17.9	75.0	29.7	15.9	20.2	24.8
Yr 10	98.0	19	88.0	15.6	93.0	26.8	15.2	18.4	22.8
Yr 11	77.8	19.4	82.0	9.1	61.8	19.4	10.9	13.5	18.5
Yr 12	53.8	10.7	57.7	8.7	52.9	15.9	8.3	10.9	14.8
Ungraded								14.6	
7-12 mean		19.7		13.9		24.2		16.3	

Notes: † Includes non-curriculum absences only (absence codes 200, 201, 202, 203, 205, 206, 207, 208, 209, 210, 211, 300, 401, 500, 700, 800, 804, 805, 900).
 * The school trendline is only plotted when there is data for each calendar year.
 ** FTE = Full Time Equivalent (including part-time and part-year fractions).
 ^ 2008 benchmarks and percentiles will be calculated in August, when data from all schools has been submitted.

School Mean against State Mean^



School Mean as percentile against SFO percentile range^



Parent Opinion

School no: 7900

School name: Healesville High School

Explanation: A self-completion questionnaire to obtain parents' opinions of the school. Parents rated a number of statements using a scale where 1=strongly disagree & 7=strongly agree. The statements were grouped into the following categories.

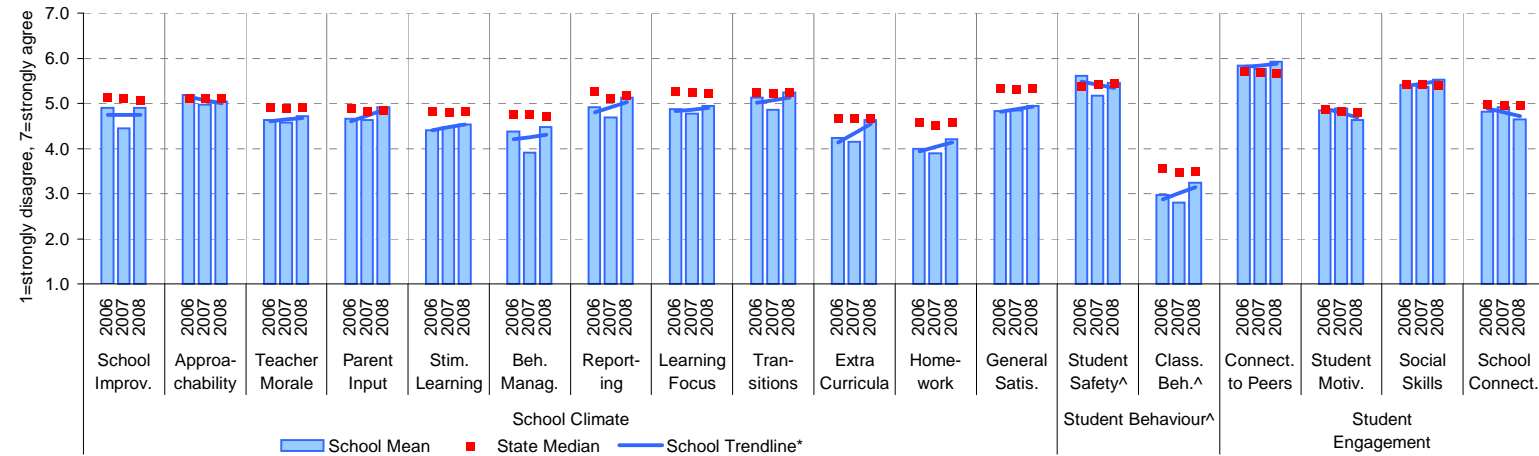
Source of data: Data scanned from questionnaires completed by parents.

Variable No. Name	Year	School mean	State Secondary median
1 School Improvement	2006	4.90	5.13
	2007	4.45	5.11
	2008	4.90	5.07
2 Approachability	2006	5.19	5.11
	2007	4.97	5.10
	2008	5.05	5.12
3 Teacher Morale	2006	4.64	4.92
	2007	4.57	4.88
	2008	4.72	4.89
4 Parent Input	2006	4.66	4.89
	2007	4.63	4.83
	2008	4.92	4.84
5 Stimulating Learning	2006	4.40	4.81
	2007	4.48	4.79
	2008	4.53	4.82
6 Behaviour Management	2006	4.37	4.76
	2007	3.91	4.76
	2008	4.47	4.71
7 Reporting	2006	4.91	5.28
	2007	4.69	5.11
	2008	5.13	5.17

Variable No. Name	Year	School mean	State Secondary median
8 Learning Focus	2006	4.87	5.27
	2007	4.78	5.24
	2008	4.95	5.22
9 Transitions	2006	5.12	5.24
	2007	4.85	5.23
	2008	5.24	5.24
10 Extra Curricula	2006	4.23	4.67
	2007	4.15	4.67
	2008	4.63	4.65
11 Homework	2006	4.00	4.57
	2007	3.90	4.51
	2008	4.20	4.57
12 General Satisfaction	2006	4.83	5.33
	2007	4.85	5.31
	2008	4.94	5.32
13 Student Safety^	2006	5.61	5.37
	2007	5.17	5.42
	2008	5.46	5.44
14 Classroom Behaviour^	2006	2.98	3.56
	2007	2.81	3.47
	2008	3.24	3.48

Variable No. Name	Year	School mean	State Secondary median
15 Connectedness to Peers	2006	5.84	5.71
	2007	5.77	5.68
	2008	5.92	5.67
16 Student Motivation	2006	4.84	4.87
	2007	4.88	4.81
	2008	4.64	4.78
17 Social Skills	2006	5.41	5.42
	2007	5.37	5.41
	2008	5.53	5.40
18 School Connectedness	2006	4.82	4.99
	2007	4.92	4.95
	2008	4.65	4.94

School Mean against Secondary State Mean



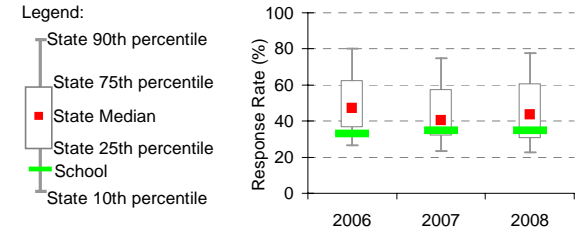
Notes: * The school trendline is plotted when there is data for each calendar year.

^ Benchmarks available for Primary, Secondary, Pri/Sec, Special and SDS schools.

** If there were 6 or less respondents, table data is not shown for confidentiality reasons. If there were 3 or less respondents, graph data is not shown for confidentiality reasons.

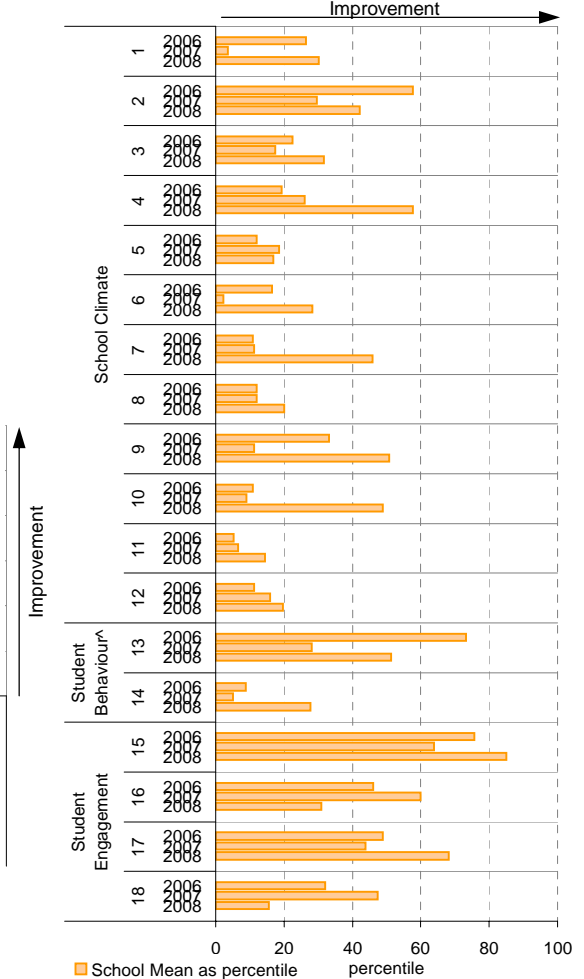
^ Parents' responses to all negatively phrased questions have been reversed for reporting purposes. Across all variables, the higher the score or percentile rank, the more positive parents' perceptions.

School response rate** against Secondary school distribution



Year	No. of respondents	No. invited	Response Rate
2006	24	73	32.9%
2007	26	75	34.7%
2008	26	75	34.7%

School Mean as percentile (by school type)



Staff Opinion

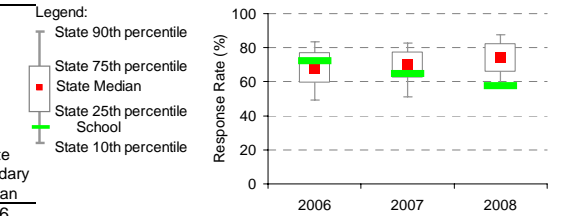
School no: 7900

School name: Healesville High School

Explanation: A self-completion questionnaire to obtain the staff's opinions of the school. The survey was administered online using the School Organisational Health Questionnaire.

Source of data: Data transmitted from school staff to DEECD via an online survey application.

School response rate** against Secondary school distribution



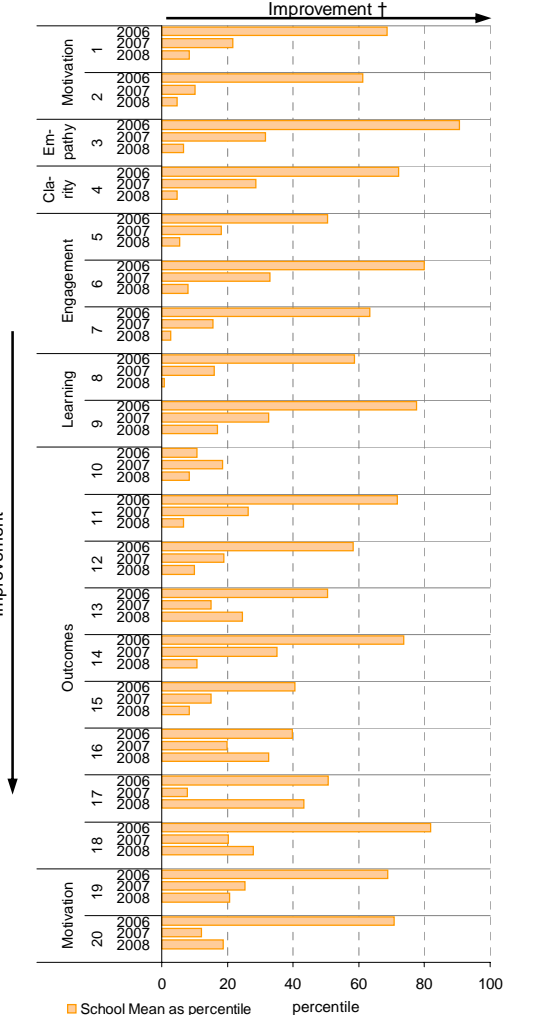
	No. of respondents	No. invited	Response Rate
2006	47	65	72%
2007	42	65	65%
2008	38	66	58%

Variable	No.	Name	Year	School mean	State Secondary median
1 Individual Morale			2006	66.7	64.2
			2007	58.4	63.5
			2008	55.4	65.0
2 School Morale			2006	63.9	60.8
			2007	46.7	60.2
			2008	46.2	62.2
3 Supportive Leadership			2006	77.6	65.0
			2007	59.5	63.8
			2008	50.0	65.8
4 Role Clarity			2006	71.3	68.0
			2007	65.0	67.8
			2008	59.6	69.1
5 Professional Interaction			2006	68.4	68.1
			2007	63.5	68.3
			2008	60.5	70.4
6 Participative Decision-Making			2006	65.9	59.0
			2007	54.2	58.7
			2008	46.9	59.8
7 Goal Congruence			2006	66.8	64.7
			2007	56.9	65.3
			2008	50.5	66.4

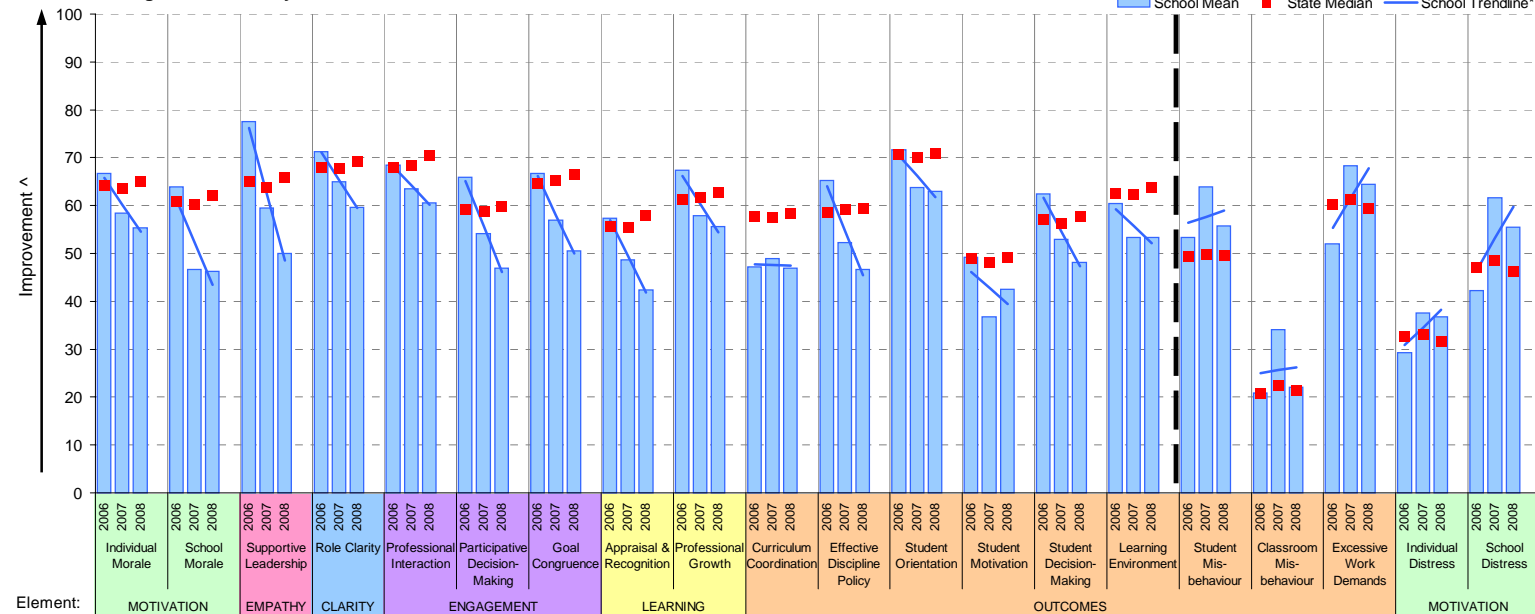
Variable	No.	Name	Year	School mean	State Secondary median
8 Appraisal & Recognition			2006	57.4	55.6
			2007	48.6	55.4
			2008	42.3	57.9
9 Professional Growth			2006	67.4	61.2
			2007	57.9	61.6
			2008	55.6	62.7
10 Curriculum Coordination			2006	47.2	57.8
			2007	48.9	57.5
			2008	46.9	58.4
11 Effective Discipline Policy			2006	65.2	58.5
			2007	52.2	59.2
			2008	46.7	59.5
12 Student Orientation			2006	71.7	70.5
			2007	63.7	70.0
			2008	62.9	70.8
13 Student Motivation			2006	49.2	48.9
			2007	36.8	48.1
			2008	42.5	49.0
14 Student Decision-Making			2006	62.4	57.2
			2007	52.9	56.2
			2008	48.2	57.8

Variable	No.	Name	Year	School mean	State Secondary median
15 Learning Environment			2006	60.5	62.6
			2007	53.3	62.3
			2008	53.3	63.8
16 Student Misbehaviour			2006	53.3	49.3
			2007	64.0	49.9
			2008	55.8	49.6
17 Classroom Misbehaviour			2006	20.9	20.9
			2007	34.0	22.4
			2008	22.0	21.4
18 Excessive Work Demands			2006	52.0	60.4
			2007	68.3	61.4
			2008	64.4	59.4
19 Individual Distress			2006	29.3	32.6
			2007	37.6	33.2
			2008	36.8	31.7
20 School Distress			2006	42.3	47.1
			2007	61.7	48.6
			2008	55.5	46.2

School Mean as percentile (by school type)



School Mean against Secondary State Median



Notes: * The school trendline is being trialled. It is only plotted when there is data for each calendar year.

** If there were 6 or less respondents, table data is not shown for confidentiality reasons. If there were 3 or less respondents, graph data is not shown for confidentiality reasons.

^ The higher the school mean, the more positive the outcome for variables 1 to 15. The lower the school mean, the more positive the outcome for variables 16 to 20.

† The higher the school percentile, the more positive the outcome for all variables.

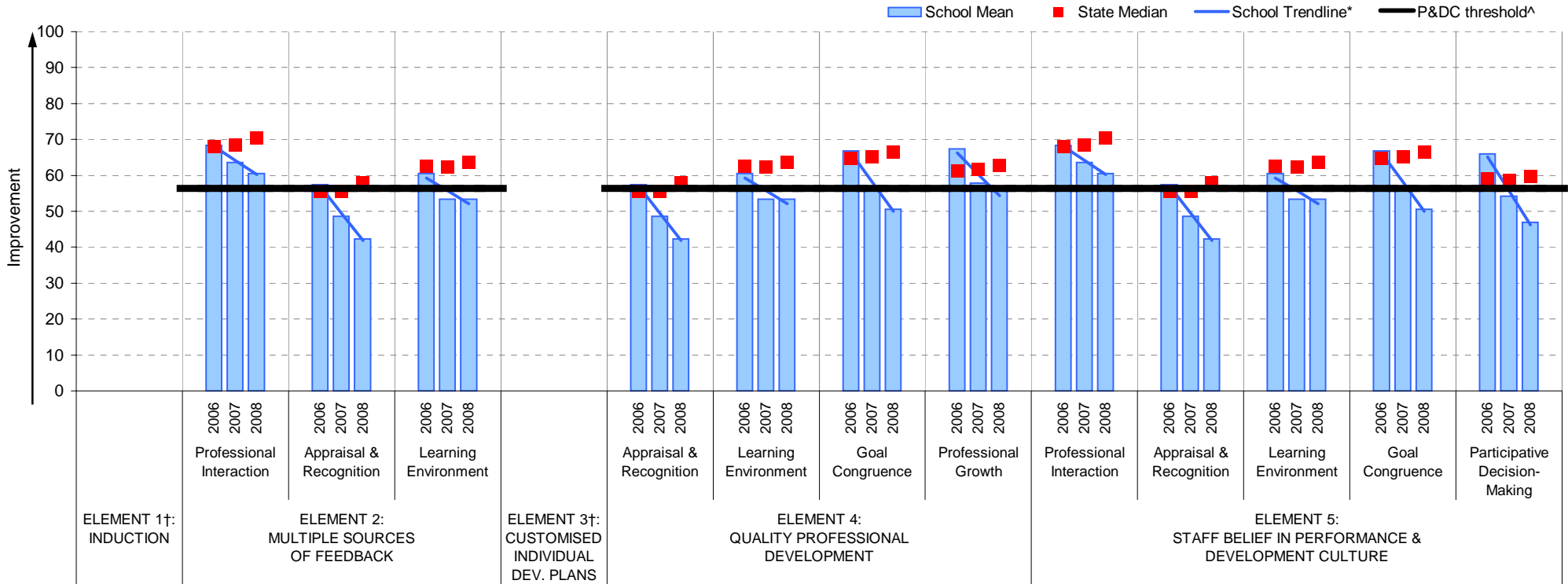
^^ Benchmarks are available for Primary, Secondary, Pri/Sec, Special & SDS schools.

Performance & Development Culture (P&DC)^{††}

NEW

School no: 7900
School name: Healesville High School
Explanation: The data on this page refers to the Staff Opinion Survey.
Source of data: Data transmitted from school staff to DEECD via an online survey application.

School Mean against Secondary State Median



- Notes:
- †† An assessment of the correlation between the P&DC Questionnaire and the Staff Opinion Survey was undertaken using data from Victorian Government schools that completed both surveys from 2005 to 2007 (ie. 699 schools). This led to the identification of the components of the Staff Opinion Survey that could be used to assist schools with the ongoing monitoring of their performance and development culture. Refer to the P&DC website for further information: <http://www.education.vic.gov.au/management/schoolimprovement/panddc/default.htm>. For numerical results relating to the above graph, refer to the Staff Opinion Survey page in this report.
 - † Note that there is no significant correlation between the Staff Opinion Survey and P&DC elements 1 (Induction) and 3 (Customised Individual Development Plans).
 - ^ The P&DC threshold was derived from the P&DC Questionnaire 'percent favourable' methodology where a school is considered at the standard of accreditation when their Element score is >75% favourable (ie. at least 75% of staff selected the top two response categories in the P&DC Questionnaire).
 - * The school trendline is only plotted when there is data for each calendar year.
 - ** If there were 3 or less respondents, graph data is not shown for confidentiality reasons.
 - ^^ Benchmarks are available for Primary, Secondary, Pri/Sec, Special & SDS schools.

Staff Sick Leave

School no: 7900

School name: Healesville High School

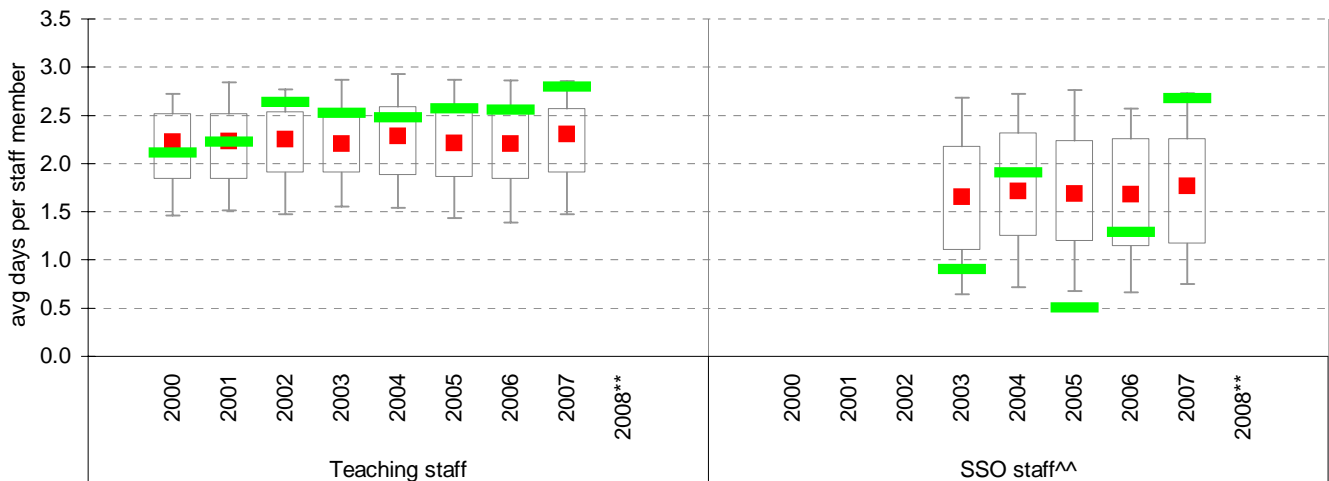
Explanation: The number of non-certificated and total sick leave days taken per staff member. A detailed explanation on how staff sick leave is calculated is provided in the Annual Reports Frequently Asked Questions page of the Standards website (<http://www.sofweb.vic.edu.au/standards/account/arepq.htm>).

Source of data: Human Resources Management System (HRMS)^.

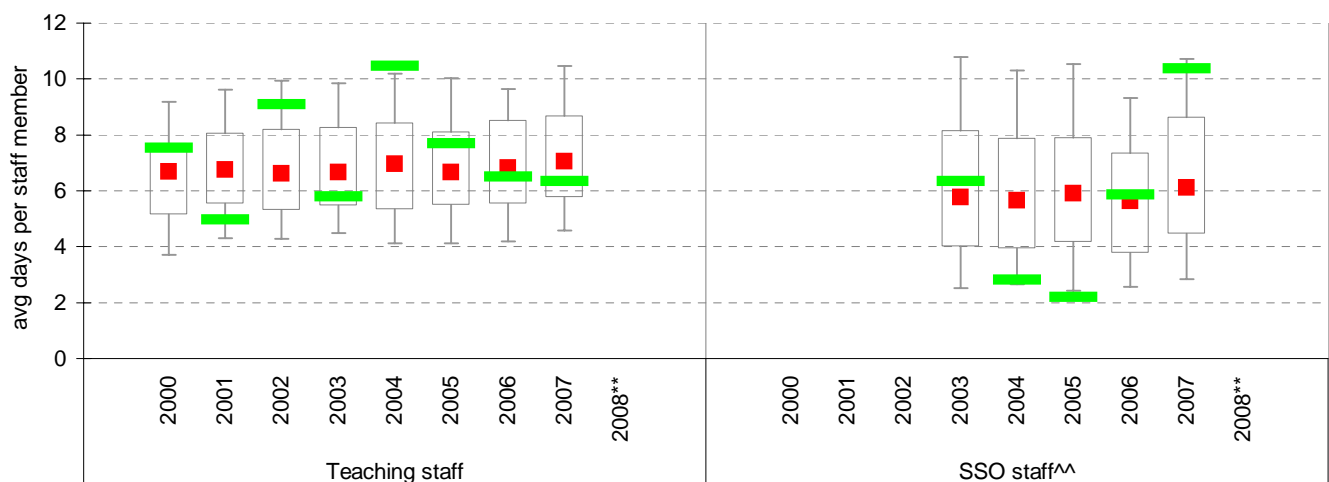
Staff Type	Non-Certificated sick leave days per staff member^									2007 State Median**
	2000	2001	2002	2003	2004	2005	2006	2007	2008**	
Teacher	2.11	2.22	2.63	2.53	2.48	2.57	2.56	2.80		2.31
SSO^^					1.91	0.51	1.29	2.68		1.77

Staff Type	Total sick leave days per staff member^									2007 State Median**
	2000	2001	2002	2003	2004	2005	2006	2007	2008**	
Teacher	7.54	4.98	9.08	5.79	10.46	7.70	6.50	6.35		7.06
SSO^^					2.81	2.19	5.85	10.38		6.10

NON-CERTIFICATED sick leave



TOTAL sick leave



Note: * The school trendline is only plotted when there is data for each calendar year.
 ** Data for 2008 will be available in April / May of 2009.
 ^ There may be some discrepancy between the results from CASES & those from HRMS. The latter are considered to be more accurate.
 ^^ Data for SSO (School Services Officer) staff is only available from 2003.

Legend:

- State 90th percentile
- School Trendline*
- State 75th percentile
- State Median
- State 25th percentile
- School
- State 10th percentile

Teaching Staff Retention

School no: 7900

School name: Healesville High School

Explanation: The retention rate of teaching staff is determined by matching staff payroll records for the last pay in June of one year (Year A), to the last pay in June of the following year (Year B).

Source of data: Human Resources Management System (HRMS).

Teaching Staff*

Year A	Year B	Number of Teaching Staff in Year A	Number of Teaching Staff retained in Year B	Teaching Staff Retention Rate	Statewide Average
2005	2006	49	45	92%	87%
2006	2007	48	40	83%	86%
2007	2008	47	41	87%	84%

Of the 49 teaching service staff at June 2005 (including those on leave without pay), 45 or 92% were still at the school at June 2006. This figure across all Government schools was 87%.

Of the 48 teaching service staff at June 2006 (including those on leave without pay), 40 or 83% were still at the school at June 2007. This figure across all Government schools was 86%.

Of the 47 teaching service staff at June 2007 (including those on leave without pay), 41 or 87% were still at the school at June 2008. This figure across all Government schools was 84%.

Ongoing Teaching Staff*^

Year A	Year B	Number of Ongoing Teaching Staff in Year A	Number of Ongoing Teaching Staff retained in Year B	Ongoing Teaching Staff Retention Rate	Statewide Average
2005	2006	44	41	93%	91%
2006	2007	41	35	85%	90%
2007	2008	41	38	93%	88%

Of the 44 ongoing teaching service staff at June 2005 (including those on leave without pay), 41 or 93% were still at the school at June 2006. This figure across all Government schools was 91%.

Of the 41 ongoing teaching service staff at June 2006 (including those on leave without pay), 35 or 85% were still at the school at June 2007. This figure across all Government schools was 90%.

Of the 41 ongoing teaching service staff at June 2007 (including those on leave without pay), 38 or 93% were still at the school at June 2008. This figure across all Government schools was 88%.

Notes: * Teaching staff includes Principal class, Teacher class and Instructor class. Teaching staff employed as visiting teachers, guidance officers, curriculum consultants, etc. are excluded as they are not charged to a particular school.

^ Not including fixed term staff, except for where staff had changed from ongoing in Year A to fixed term in Year B.

Bank Balances

School no: 7900

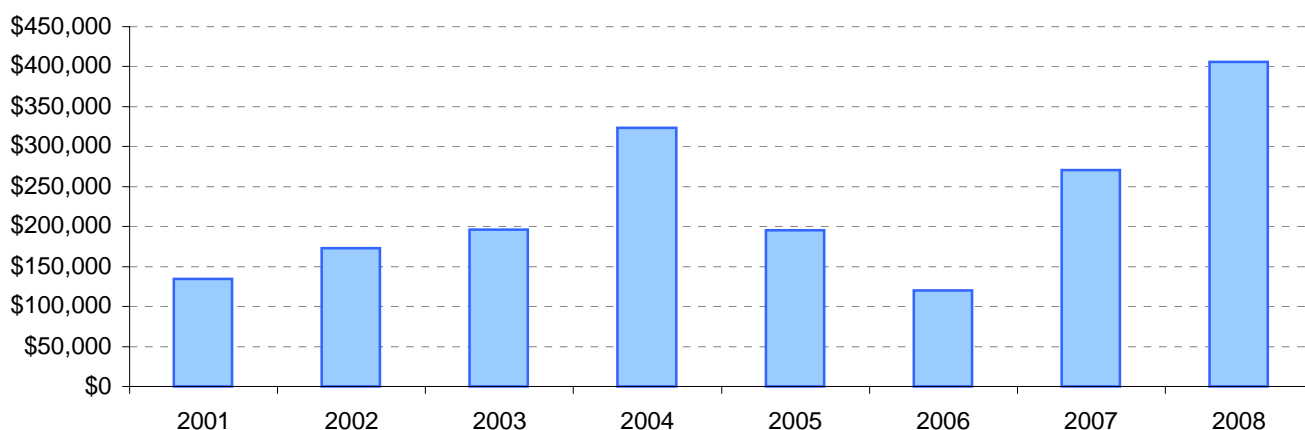
School name: Healesville High School

Explanation: Account balance figures include official and investment accounts, and are calculated by taking the opening balance at 1st January plus the total receipts at 31st December less total payments at 31st December.

Account Balances (Official plus Investment Accounts)

2001	\$134,636	2005	\$195,407
2002	\$172,591	2006	\$120,425
2003	\$195,917	2007	\$270,641
2004	\$323,392	2008	\$406,078

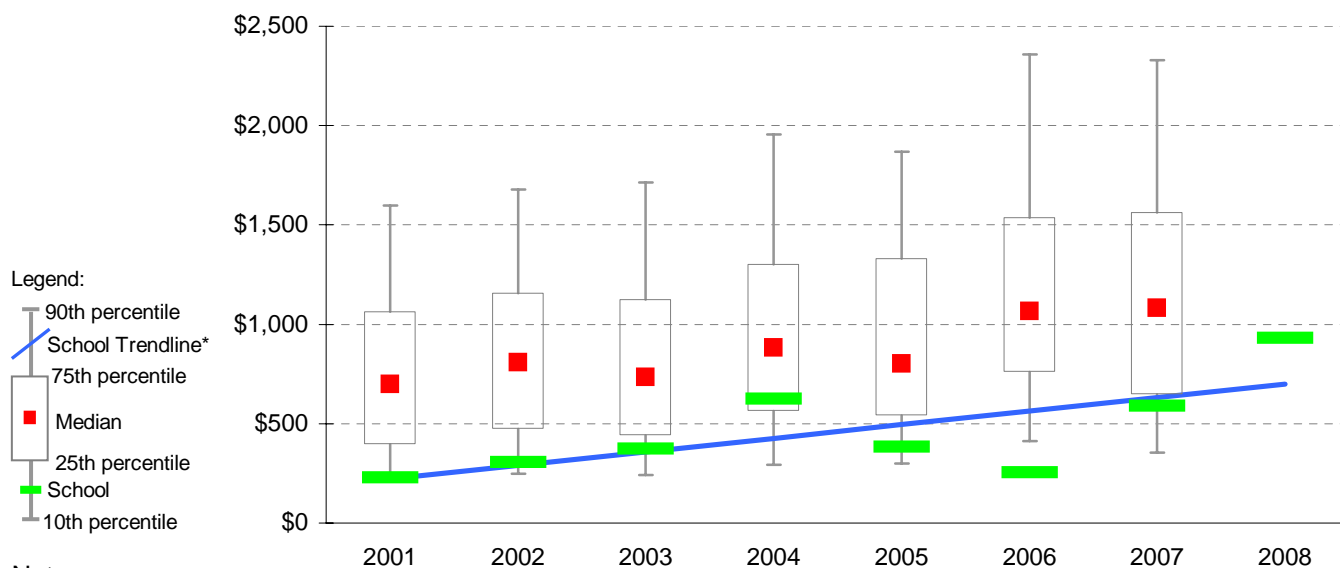
Account Balances



Account Balances (Official plus Investment Accounts) per student[†]

2001	\$227	2005	\$382
2002	\$305	2006	\$253
2003	\$373	2007	\$590
2004	\$625	2008	\$930

School account balances per student enrolled in August census plotted on state Secondary benchmarks[^]



Notes:

* The school trendline is being trialled. It is only plotted when there is data for each calendar year.

† The account balance per student has been calculated to enable some comparison to be made between schools.

^ Benchmarks for primary, secondary, pri/sec, SDS, special and language schools.